

Charming finca near the prestigious Port d'Andratx



general:

object number external:	KA0999	as from:	21.07.2025
usage:	habitation	marketing method:	purchase
property:	House	construction year:	2002
place:	07157 Port Andratx	living space:	215,00 m ²
Floor space:	530,00 m ²	Total size of site:	3.609,00 m ²
Number of Rooms:	6,0	Number of bedrooms:	5,0
Number of bathrooms:	6,0	number of parking spaces:	2,0
Condition:	groomed		

prices:

purchase price:	2.500.000,00 €
-----------------	----------------

energy certificate:

value class:	F
--------------	---

contact person:

company:	Port Andratx Finest Properties S.L.U.	name:	Agnes Gyulai
position:	Sales Agent	street:	Carrer d'Antoni Calafat Toni Pino 7
place:	07157 Port Andratx	www:	www.kensington-andratx.com

Infrastructure:

Description:

This charming finca, located just minutes from the prestigious Port d'Andratx, boasts breathtaking mountain and sea views.

The ground floor offers a spacious open-plan living and dining area with a modern kitchen, perfect for entertaining. A guest room with an en-suite bathroom and a separate guest toilet complete this level.

Upstairs, two generous bedroom suites provide comfort and privacy, with one featuring a private balcony ideal for enjoying morning coffee with scenic views.

A separate guest house with two en-suite bedrooms offers additional space for visitors.

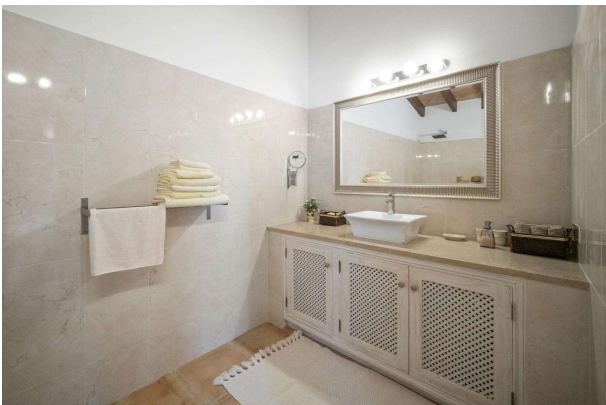
The outdoor area is designed for relaxation and entertaining, featuring a sparkling pool surrounded by sun terraces, a covered BBQ area, and shaded seating perfect for hosting gatherings or unwinding in the Mediterranean breeze. The property is equipped with a private well, an osmosis system for pristine water, and high-speed fiber optic internet. A two-car carport ensures secure and shaded parking.

Combining comfort, style, and convenience, this finca is a true gem near Port d'Andratx perfect for embracing Mallorca's relaxed lifestyle.

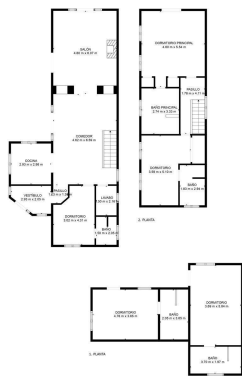
images











TOTAL: 215 m2
1. PLANTA: 149 m2, 2. PLANTA: 66 m2
LAS MEDIDAS SON CALCULADAS CON LOS DATOS DE LOS PLANOS DE CONSTRUCCIÓN. SE PUEDE QUE HAYA DIFERENCIAS ENTRE LOS DATOS DE CONSTRUCCIÓN.