



**KENSINGTON®**  
Finest Properties International

## Penthouse on first sea line



## general:

---

object number external:	KA01013	as from:	21.07.2025
usage:	habitation	marketing method:	purchase
property:	flat	construction year:	2015
place:	07157 Port Andratx	living space:	135,00 m²
Floor space:	315,00 m²	floor:	4
Number of Rooms:	4,0	Number of bedrooms:	3,0
Number of bathrooms:	3,0	number of parking spaces:	2,0
Condition:	fully renovated	Interior cat.:	luxury

## prices:

---

purchase price:	2.990.000,00 €
-----------------	----------------

## energy certificate:

---

value class:	D	beaconing:	air heat pump
primary energy sources:	Luftwärmepumpe		

## contact person:

---

company:	Son Vida Finest Properties S.L.	name:	Florian Mitzscherlich
position:	CEO	street:	Avda. Rey Jaume I, No. 109, Local 2
place:	07180 Santa Ponsa	www:	www.kensington-santaponsa.com

## Infrastructure:

## Description:

---

Unique penthouse with private pool in 1st sea line with access to the beach and fantastic views of the harbor and the open sea.

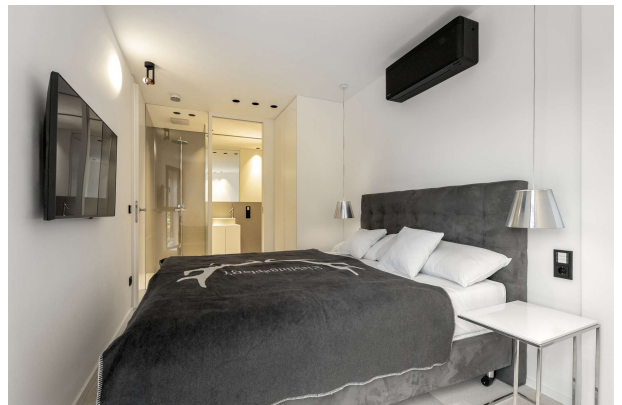
A total of about 135 m<sup>2</sup> built area plus 140m<sup>2</sup> terrace and roof terrace with practical summer kitchen. The penthouse offers an open plan living / dining area, 3 bedrooms, 2 bathrooms, underfloor heating, air conditioning w / c, domotic system, a lift, a storage room and 2 underground parking spaces.

The natural harbor of Port d'Andratx with its picturesque bays is by far one of the most sought-after locations in the Mediterranean and known for its luxury properties of lasting value. Restaurants, cafes, supermarkets, shops and international medical centers are open all year. The popular golf course "Golf de Andratx" is just a short drive away. Palma is only about 25 minutes drive away. In contrast region around Andratx combines international flair with rustic country life, you find the traditional fishing harbor just opposite the exclusive yacht club, and the Mediterranean Sea meets the southern foothills of the Tramuntana Mountains: An unparalleled paradise.

## images

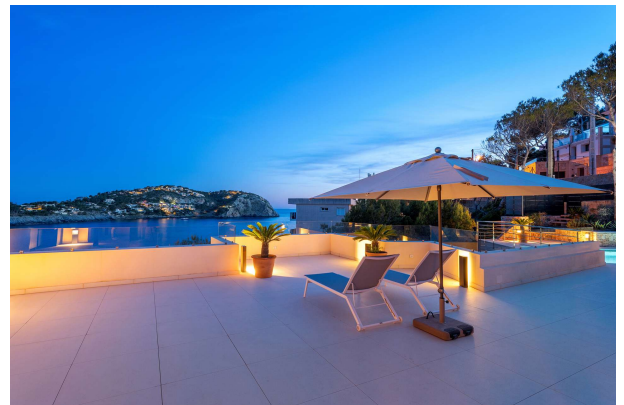
---

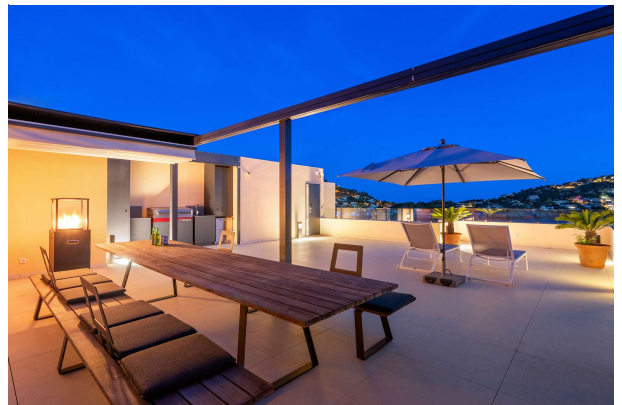


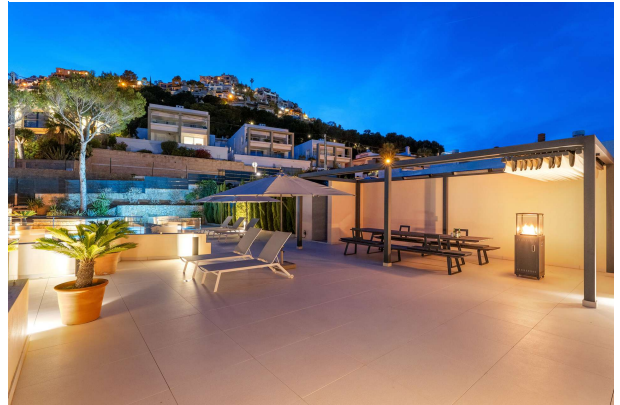


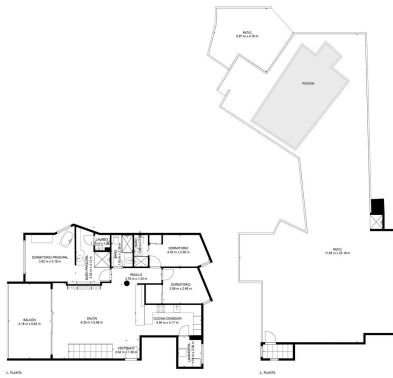












**TOTAL: 112 m2**  
1. PLANTA: 120 m2, 2. PLANTA: 2 m2  
AREAS EXCLUIDAS: BALCON: 18 m2, PATIO: 189 m2  
LAS MEDIDAS SON CALCULADAS UTILIZANDO LA TÉCNICA DE LOS CUADROS, SIN IR EN NINGÚN MOMENTO A VERIFICARLAS.