



KENSINGTON[®]

Finest Properties International

Modern garden apartment in first sea line in Port Andratx, Mallorca



general:

object number external:	KA0950	Date:	04.11.2024
usage:	habitation	marketing method:	purchase
property:	flat	construction year:	2007
place:	07157 Port Andratx	living space:	87,00 m ²
Floor space:	147,00 m ²	Number of Rooms:	3,0
Number of bedrooms:	2,0	Number of bathrooms:	2,0
number of parking spaces:	1,0	Condition:	well maintained

prices:

outside parking space:	0,00 €	Error: could not translate key	0,00 €
purchase price:	1.495.000,00 €	fix_price_money_label.immobilie_preise_stpSonstiges	1.495.000,00 €

" with value "" and 1 argument(s)!"

energy certificate:

beaconing: electric

contact person:

name:	KENSINGTON Santa Ponsa & Andratx	street:	Avda. Rey Jaime 109 Local 2
place:	07180 Santa Ponça	phone:	+34971690421
Email:	laura.cauduro@kensington-international.com		

Infrastructure:

Description:

Contact us for a virtual tour!

Fantastic 2 bedroom apartment with stunning sea views in Port Andratx, Mallorca. In the immediate vicinity is the harbor. Port Andratx is known for its exclusive atmosphere, the many first class restaurants, boutiques and leisure facilities.

A light-filled living and dining area with a modern open kitchen forms the center of the 87 m² apartment. The apartment has 2 comfortable bedrooms and 2 bathrooms, one of which is an en-suite bathroom.

The 60 m² south facing terrace offers many hours of sunshine and a fantastic panoramic view of the open sea.

Furthermore, the small, modern residential complex has an infinity community pool. Here you can refresh yourself on hot days and enjoy the sun of Mallorca to the fullest.

Other features: Elevator, parking, storage rooms, private terrace, air conditioning hot/cold, underfloor heating, ISO windows, built-in wardrobes, internet+TV, camera, new water pipes.

Please contact us for more information or to arrange a viewing. All information without guarantee. Kensington reference: KPP07206

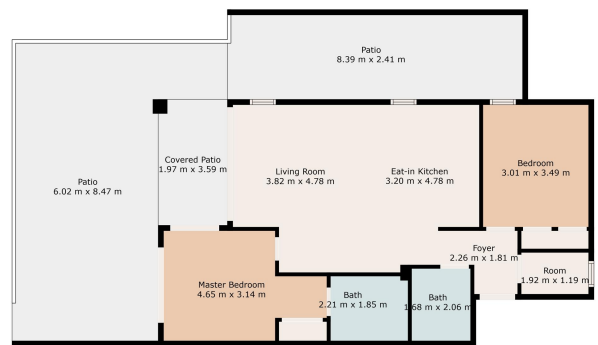
images











TOTAL: 90 m²
 EXCLUDED AREAS: PATIO: 5.70 m², COVERED PATIO: 7 m²
Measurements Obtained by Photos & Not Guaranteed.