



**KENSINGTON**<sup>®</sup>  
Finest Properties International

## Building plot with valid building license near Puigpunyent, Mallorca



## general:

---

<b>object number external:</b>	KPP07667	<b>as from:</b>	03.12.2024
<b>usage:</b>	habitation	<b>marketing method:</b>	purchase
<b>property:</b>	plot of land (habitation)	<b>place:</b>	07194 Puigpunyent
<b>available from:</b>	Immediately	<b>Total size of site:</b>	1.535,00 m <sup>2</sup>
<b>Number of Rooms:</b>	5,0	<b>Number of bedrooms:</b>	3,0
<b>Number of bathrooms:</b>	3,0	<b>number of parking spaces:</b>	2,0

## prices:

---

**purchase price:** 350.000,00 €

## energy certificate:

---

## contact person:

---

<b>name:</b>	Kensington Palma	<b>street:</b>	
<b>place:</b>		<b>phone:</b>	+34 971674306
<b>fax number:</b>	0034971673040	<b>Email:</b>	palma@kensington-international.com

## Infrastructure:

---

## Description:

---

This BUILDING PLOT WITH BUILDING LICENSE is located in PUIGPUNYENT, Mallorca. Puigpunyent is a picturesque village with good restaurants and a supermarket, surrounded by impressive mountains. Palma is 13 km away.

The generous PLOT MEASURES 1,535 m<sup>2</sup> and is situated in a RESIDENTIAL AREA. The connections for WATER, ELECTRICITY AND SEWAGE are in the street.

There is a valid building licence for a SINGLE-FAMILY HOUSE WITH 2 FLOORS + BASEMENT, at least 3 bedrooms with bathrooms en suite, a large POOL (10x3 m) and a sunny POOL TERRACE in front of the living area. You can START CONSTRUCTION IMMEDIATELY.

Layout of the villa (approx. 270 m<sup>2</sup>): on the ground floor, entrance area, impressive living/dining/kitchen area with double-height ceiling, guest WC, 1 twin bedroom with bathroom en suite, utility room; upstairs, 2 twin bedrooms with bathrooms en suite (master suite with dressing room as well as shower and bathtub); in the basement, a large multi-purpose room (e.g. home cinema, play room, further bedroom), storeroom, technical room, GARAGE for 2 cars.

Please ask us for further information or to arrange a viewing. We will not assume any liability for the information provided. Kensington reference: KPP07667

## Location:

---

Puigpunyent, a village in the Serra de Tramuntana on Mallorca, is located around 15 kilometers from Palma and offers a peaceful, natural environment with pine forests and olive groves. The village is characterized by traditional architecture, charming cafés and a lively weekly market. It is well connected to Palma and the airport, providing easy access to city amenities and international connections. Leisure options include hiking, cycling, winery visits and golf. Puigpunyent is ideal for those who want to enjoy authentic Mallorca without sacrificing modern comforts.

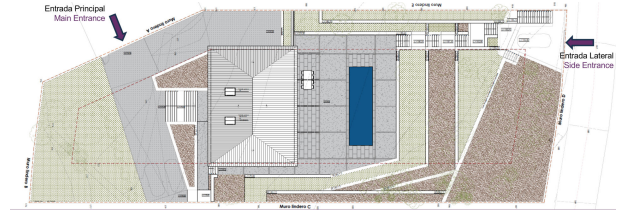
## images

---

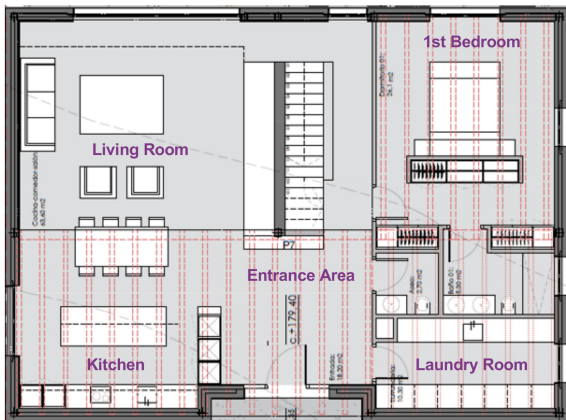




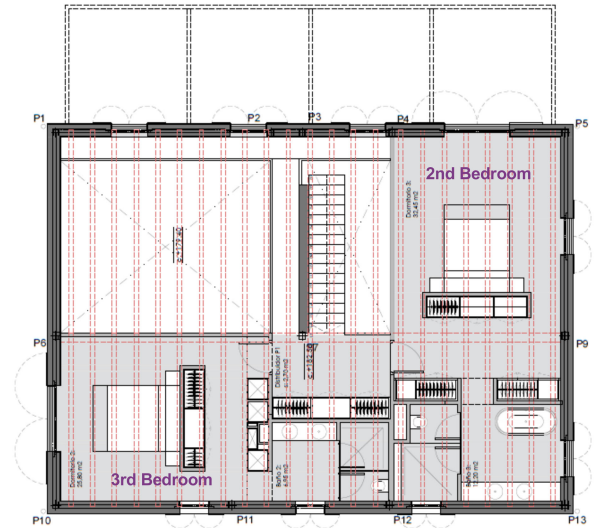
Plan situation on plot



Plan ground floor



Plan 1st floor



Plan basement

