

Charming Mediterranean-Style Villa in Carrer Bèlgica



general:

object number external:	KSP01803	as from:	04.08.2025
usage:	habitation	marketing method:	purchase
property:	House	construction year:	2000
place:	07180 Santa Ponça	living space:	320,00 m²
Total size of site:	996,00 m²	Number of Rooms:	5,0
Number of bedrooms:	4,0	Number of bathrooms:	3,0
number of parking spaces:	1,0	Condition:	part / full renovation required
Interior cat.:	standard		

prices:

purchase price:	2.630.000,00 €
-----------------	----------------

energy certificate:

value class:	E	beaconing:	electric
primary energy sources:	Strom		

contact person:

company:	Son Vida Finest Properties S.L.	name:	Karina Maure
position:	Sales Agent	street:	Avda. Rey Jaume I, No. 109, Local 2
place:	07180 Santa Ponsa	www:	www.kensington-santaponsa.com

Infrastructure:

Description:

Discover this charming Mediterranean-style home in Carrer Belgica — a perfect blend of comfort, privacy, and Mediterranean charm. It offers a garage and exterior parking for several cars, making it ideal for families or entertaining guests.

The layout includes two bedrooms sharing a modern bathroom, a guest toilet, and an open-plan living-dining area with a stylish kitchen and breakfast bar, all opening onto a spacious terrace. There's also a laundry room and a guest suite with its own bathroom.

Enjoy outdoor living with a private pool, barbecue area, and sunny terraces. The first floor hosts a stunning master suite with walk-in wardrobe, jacuzzi, and a large terrace with partial sea views.

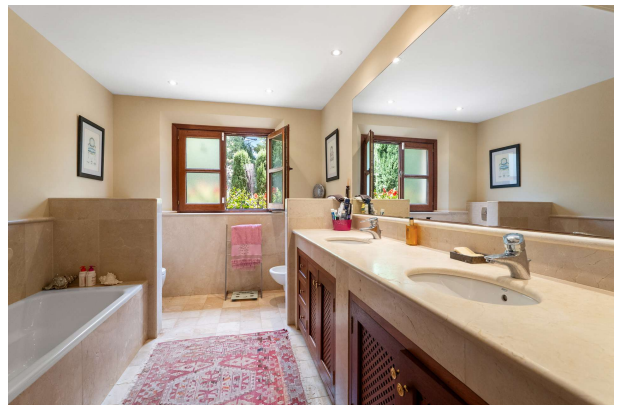
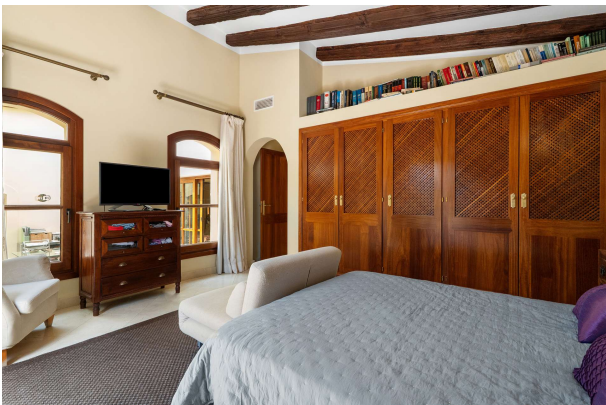
Extras include electric underfloor heating and centralized air conditioning. The pool currently requires maintenance, and the house is built with high-quality, sophisticated materials—ideal for an update in 2025

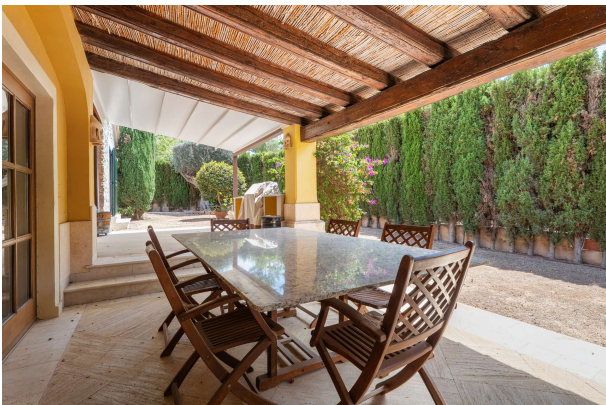
Don't miss this opportunity to live the Mediterranean lifestyle — contact us today to arrange a viewing!

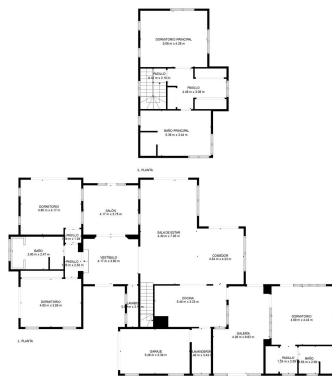
images











TOTAL: 359 m²
 1. PLANTA: 138 m², 2. PLANTA: 62 m²
 ÁREAS EXCLUIDAS: GARAJE: 18 m², GARAJE: 24 m²
 PORCHOS: 23 m²

LOS MEDIDOS SON CALCULADOS UTILIZANDO LA TÉCNICA DE CÁLCULO. SON DE SUJA TOLERANCIA PERO NO GARANTIZADOS.