

Charming townhouse in Santa Maria, Mallorca



general:

object number external:	KPP07776	as from:	24.07.2025
usage:	habitation	marketing method:	purchase
property:	House	construction year:	1950
place:	07320 Santa Maria del Camí	living space:	136,00 m²
Total size of site:	135,00 m²	Number of Rooms:	4,0
Number of bedrooms:	3,0	Number of bathrooms:	2,0
Condition:	groomed		

prices:

purchase price:	475.000,00 €
-----------------	--------------

energy certificate:

type of energy ID:	VERBRAUCH	expiry date:	2033-03-29
age group:	2014	value class:	D
primary energy sources:	Holz	energy consumption value:	150 kWh/m²/a

contact person:

company:	KENSINGTON Palma	name:	KENSINGTON Palma
street:	C/ Conquistador 8, bajo	place:	07001 Palma de Mallorca
www:	www.kensington-palma.com		

Infrastructure:

Description:

This well-kept house with a living space of approx. 136 m² is in good condition and is located just a few steps from the central market square in Santa Maria - with shopping facilities, parking spaces and the popular weekly market every Sunday just around the corner.

The house impresses with its central location and authentic charm. It is ready for immediate occupancy and at the same time offers the opportunity to gradually personalize it.

On the first floor, you will find an open-plan living and dining area with a beautiful arch and large fireplace - ideal for creating a cozy living space. The fully equipped kitchen offers everything you need to cook and feel at home. A bathroom and a small, sheltered courtyard round off the first floor.

On the upper floor there are three bedrooms - one of which has access to a small terrace - and a further bathroom. Further features: New electrics, air conditioning (hot/cold), wooden beamed ceiling, fitted wardrobes, aluminum folding shutters, beautiful, original entrance door, cistern for rainwater harvesting, connection to the public water network. The spacious terrace (4 x 4 m) with a small garden area (3 x 1.5 m) offers space for a cozy seating area, a barbecue corner, a few plants or even a small herb bed.

Please contact us for further information or a viewing. All information without guarantee. Kensington reference: KPP07776

Location:

Santa Maria del Camí is a picturesque village in the center of the island of Mallorca, known for its idyllic location and charming atmosphere. The municipality is located about 20 kilometers northeast of Palma, the capital of Mallorca, and is easily accessible via the Ma-13 freeway, which provides quick access to the city and the international airport.

The town itself is characterized by its traditional architecture, narrow streets and numerous historic buildings. Santa Maria del Camí is surrounded by a lush, agricultural landscape dominated by vineyards, olive groves and almond trees. This region is particularly known for its wine production and is home to some of the best wineries on the island, attracting local and international visitors.

The village has an excellent infrastructure with various stores, supermarkets, restaurants and cafés that make daily life pleasant and convenient. Every Sunday, a large weekly market is held in the central market square, selling fresh local produce, handicrafts and other goods.

For nature lovers and outdoor enthusiasts, the surroundings of Santa Maria del Camí offer numerous opportunities for activities such as hiking, cycling and horse riding. The nearby Tramuntana Mountains, a UNESCO World Heritage Site, offer breathtaking landscapes and a variety of leisure activities.

The municipality is characterized by a high quality of life and an authentic Mallorcan lifestyle. Thanks to its strategic location, excellent connections and proximity to Palma and the island's most beautiful beaches, Santa Maria del Camí is an extremely attractive choice for both residents and vacation home owners.

images

62fe3f38-7412-4482-b819-cea3930914e1



eb96788a-8237-4c52-8c8f-f4a577f3831d



91e04bb1-6be6-41d6-a79c-96ca9eebe8a5



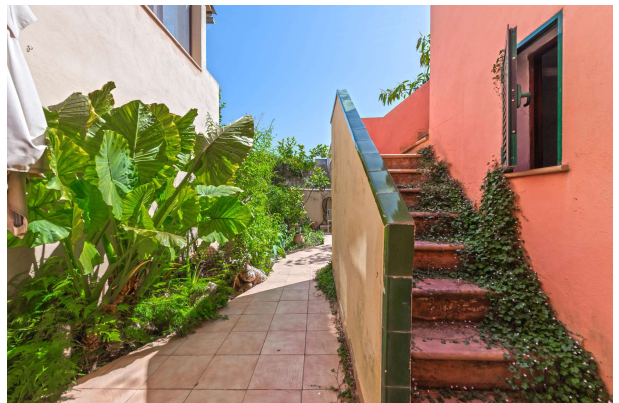
96e04582-ca6d-42b4-b81f-6f59f37e26a3



96799942-b740-4a7b-a109-652b1a34e3d0



679109f2-f65d-4b8d-acb0-a682f9b03bbb



b93bd379-2dbf-4a63-961e-4d34ca5ebb45



ac14113c-a522-4466-b75a-5ce40738148c



cf61291e-389c-44cc-8bef-03b2164ba7c8



c58a5b94-26ed-4be7-8073-971f43a192d5



dc35949e-b463-47cc-a66e-25b4b8cfe1dc



f6f69987-668f-4773-9cc9-147365ffc023

