



**KENSINGTON**<sup>®</sup>  
Finest Properties International

## Detached house for refurbish and extension



## general:

---

<b>object number external:</b>	KEM201	<b>as from:</b>	18.11.2024
<b>usage:</b>	habitation	<b>marketing method:</b>	purchase
<b>property:</b>	House	<b>construction year:</b>	1955
<b>place:</b>	28016 Madrid	<b>living space:</b>	120,00 m <sup>2</sup>
<b>Total size of site:</b>	300,00 m <sup>2</sup>	<b>Number of bedrooms:</b>	4,0
<b>Number of bathrooms:</b>	2,0		

## prices:

---

**purchase price:** 1.375.000,00 €

## energy certificate:

---

## contact person:

---

<b>company:</b>	Son Vida Finest Properties SL	<b>name:</b>	
<b>street:</b>	Avda. Rey Jaume I N° 109, Local 2	<b>place:</b>	07180 Santa Ponsa
<b>phone:</b>	+34 971 690 421	<b>fax number:</b>	+34 971 571 079
<b>Email:</b>	santaponsa@kensington-international.com	<b>www:</b>	www.kensington-santaponsa.com

## Infrastructure:

---

## Description:

---

KENSINGTON Finest Properties Madrid presents this property located in one of the most coveted areas of Chamartín, with great possibilities for refurbishment and extension.

It is a ground floor property for complete refurbishment and/or extension, with the possibility of increasing the constructed area up to 360 metres built over 3 floors (basement + ground floor + attic floor). We have a proposal for extension and an estimate of works carried out by an architectural studio, in which you will be able to see the enormous potential of this property to build a luxury home in an exclusive location.

The infographics and plans presented are merely a proposal and are not binding as to their urban viability. The price of the property does not include project or execution of works.

The property is located in the heart of the Nueva España neighbourhood in the Chamartín district, so it enjoys a privileged location with access to all kinds of services around it, while enjoying the exclusivity of living in a detached house with a private garden in the heart of Madrid city.

## images

---

Salón



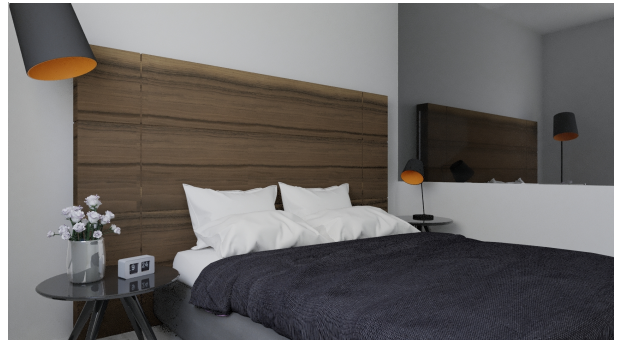
Salón



Cocina



Dormitorio



Baño



Buhardilla



Piscina



Parcela 1



Parcela 2



Parcela 3



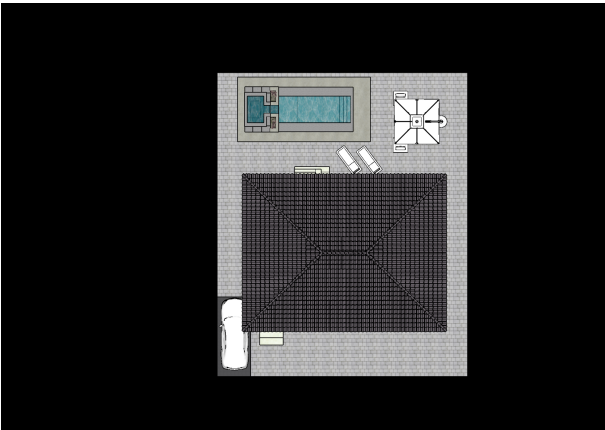
Parcela 6



Entorno



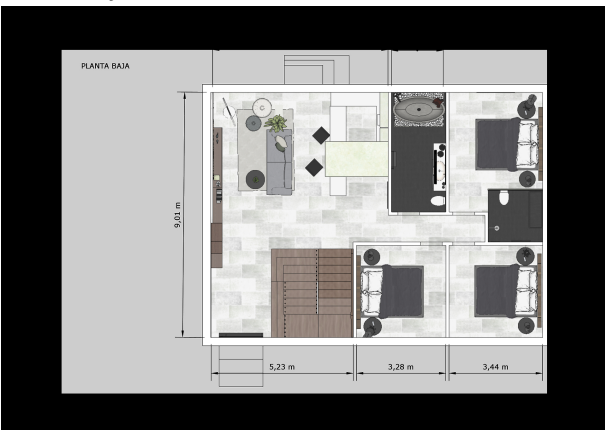
Plano de parcela



Planta sótano



Planta baja



Planta primera (abuhardillada)

