

Elegant villa in Son Vida with guest house, pool & parking space



general:

object number external:	KPP07779	as from:	24.07.2025
usage:	habitation	marketing method:	purchase
property:	House	construction year:	1998
place:	07013 Son Vida	living space:	400,00 m ²
Floor space:	550,00 m ²	Total size of site:	2.500,00 m ²
Number of Rooms:	5,0	Number of bedrooms:	5,0
Number of bathrooms:	5,0	number of parking spaces:	2,0
Condition:	groomed	Interior cat.:	upmarket

prices:

purchase price:	4.980.000,00 €
-----------------	----------------

energy certificate:

type of energy ID:	VERBRAUCH	expiry date:	2035-04-14
age group:	2014	value class:	D
beaconing:	electric	primary energy sources:	Strom
energy consumption value:	91,70 kWh/m ² /a		

contact person:

company:	KENSINGTON Palma	name:	KENSINGTON Palma
street:	C/ Conquistador 8, bajo	place:	07001 Palma de Mallorca
www:	www.kensington-palma.com		

Infrastructure:

Description:

Nestled in the prestigious area of Son Vida, Mallorca, directly overlooking the renowned golf course, this beautifully renovated villa offers an exceptional lifestyle in one of the island's most exclusive neighborhoods.

The main house features 3 spacious bedrooms and an open, light-filled living and dining area that opens onto a covered porch with elevated views. On the lower level, you'll find the inviting swimming pool, a generous poolside terrace, and private areas ideal for sunbathing and entertaining.

The property also includes a separate guest house and a parking, offering comfort and privacy for visitors. Wellness amenities such as a fully equipped gym and sauna add to the luxurious living experience.

Recently renovated to high standards and in immaculate condition, the home features underfloor heating, air conditioning, premium wood flooring, double-glazed windows and doors, and a sleek Miele-fitted kitchen.

A rare opportunity to own a move-in-ready haven of peace and elegance in Son Vida.

Please contact us for further information or a viewing. All information without guarantee. Kensington reference: KPP07779

Location:

Son Vida is an exclusive residential area in Mallorca, located to the west of Palma, the island's capital. Known for its luxurious villas, first-class golf courses and breathtaking views of the Mediterranean and the surrounding mountains, Son Vida is one of the most prestigious addresses on the island.

The area is particularly popular with wealthy residents and international celebrities who appreciate the quiet yet well-connected location. From Son Vida, both the center of Palma and the beautiful beaches of the southwest coast of Mallorca can be reached in just a few minutes by car.

Son Vida offers a wide range of amenities and leisure activities. The three renowned golf courses are a particular highlight: Golf Son Vida, Golf Son Muntaner and Golf Son Quint. These courses are renowned not only for their golfing challenges, but also for their scenic beauty and first-class facilities.

Wellness and relaxation are provided by the luxurious hotels and spas in the area, including the famous Castillo Hotel Son Vida, which is housed in a historic castle and offers first-class service and spectacular views. These hotels often host high-profile events and offer exquisite gastronomy.

The architecture in Son Vida is characterized by modern, elegant villas and houses, often with large plots, private pools and lush gardens. The properties here are highly sought after and represent some of the most expensive and exclusive residences in Mallorca.

Son Vida's proximity to Palma gives residents easy access to world-class restaurants, boutiques, cultural events and

the city's vibrant nightlife. At the same time, Son Vida offers a peaceful and private environment perfect for relaxation and luxury living.

In summary, Son Vida is synonymous with exclusivity and luxury in Mallorca, ideal for those seeking a prime residential location with excellent accessibility and numerous leisure options.

images

b3605c83-bca5-4e32-8ec4-afdeb361f960



3bf1b96e-8179-46da-9e7f-9bc8ff73a11e



28df5b4c-0f20-4721-a312-0a7455bef513



6a444d03-6266-4f7d-af78-4258119df88b



6c49ba02-f044-4913-9892-a4ec1b1977b2



8d05d947-1ec8-44b0-b7ff-407e4a53fc6e



09b9cb70-0460-4163-a7a9-0d260ee66038



431b4851-b607-4695-94cf-dcf80a3d2d15



20ab6010-606d-4724-aa24-15d3fd9c0346



62bb05bb-df0b-4598-847d-c6e832791c5b



37265a17-8445-4c91-a362-7852f88eeb7b



274249be-d6f6-435c-8d13-d78c5a4bd5b0



03a1abf6-2e12-4348-b26d-4434b88fba3e



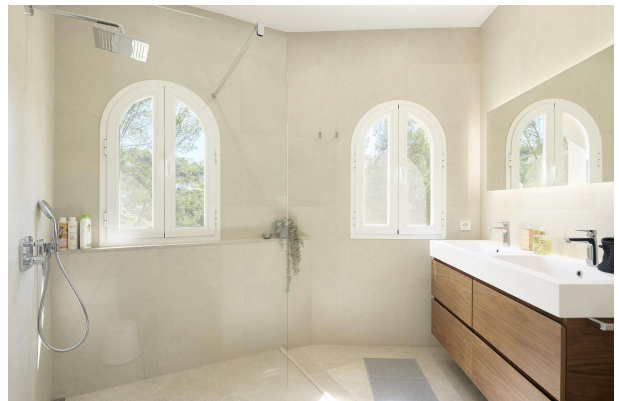
5b3255a4-796d-4932-8c3b-934aa79d3190



7d10f621-ebfa-4bde-8b39-1e3a2305e2be



826f97c6-a568-4540-9f8b-599076485944



49769ad6-d59c-42f9-a84c-54ff765c7334



4790007f-cab6-46b5-8cab-3acf37f8aed9



a3dd0f92-afb2-46c3-a41e-e07694aa5c4f



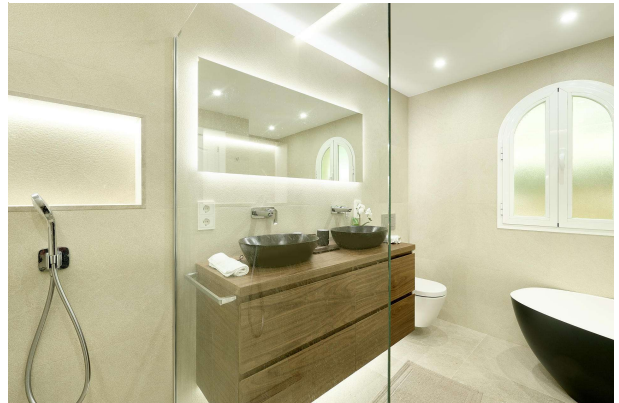
a3490b4e-6c16-4c41-af31-0201f2ba0a32



c2e42854-ff0c-4f94-9b50-75c29d8f5bdb



c14babbe-86cc-43c1-923d-00dc2c02cbf0



2d2bd3eb-855c-4e9b-bfe2-c75b379e310a



ca986a16-05a6-42d2-8294-ddd4ab4c32e3



c8465070-0aaf-4ff7-a4f0-6ad0a785981b



cbfb0d27-75b7-43f3-bd98-2cb2b75abf3b



ccb9c9b9-5b06-449f-b791-7f4d7bb2f091



ceaed806-9953-4bbd-96af-6af859a38272



d252d54b-978c-4470-82e6-39a90e3b4f8a



dc7b1104-0056-478f-8a52-c42e361b6e42



de6653e6-8616-4703-91d3-efd07bd200b5



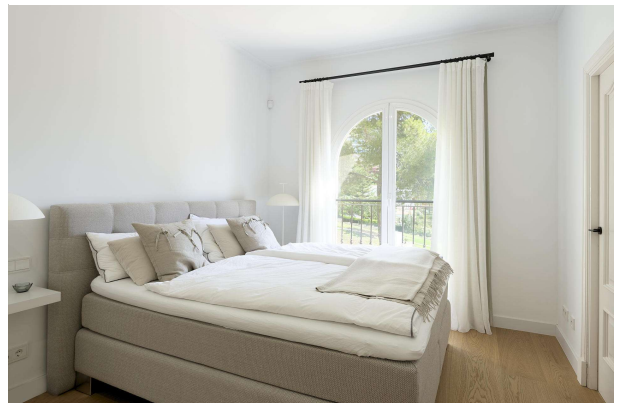
e03e503c-41b2-4098-a1c1-80b9019f4fad



e93e4093-dcc9-445b-800d-faaaf1e10c49



e546abf3-3920-4f51-b277-85604ae57e50



e8461e33-402b-4653-896b-0a910600f35c



e129952d-9b39-40e6-9728-9b32dfe214ee



e45663a7-88ad-4640-8784-022f41206cc5



eb6a4e31-4447-4754-afef-72b915d6d61d



e9671895-60b2-4d41-8d94-622f23feb3b8



fb6d0eef-b78c-4c1c-9f61-ed92e499e720

