



KENSINGTON[®]
Finest Properties International



general:

object number external:	KBMN291	as from:	13.11.2024
usage:	habitation	marketing method:	purchase
property:	House	construction year:	2024
place:	08394 Sant Vicenç de Montalt	Number of bedrooms:	4,0
Number of bathrooms:	3,0		

prices:

purchase price: 1.799.000,00 €

energy certificate:

contact person:

company:	Indisi Group S.L.	name:	Angela Navas
street:	Port Balis 3	place:	08392 Sant Andreu de Llavaneres
phone:	+34 931 591 558	Email:	angela.navas@kensington-international.com
www:	www.kensington-maresme.com		

Infrastructure:

Description:

Discover this exclusive, elegant and functional villa, recently built, offering stunning sea views in the coveted Supermaresme Golf urbanization in Sant Vicenç de Montalt.

Let yourself be enveloped by the luxury and tranquility that this beautiful single-family residence offers. With a contemporary and sophisticated architectural design, this villa harmonizes perfectly with its natural surroundings, offering an ideal fusion of luxury, privacy and comfort.

Built area: 340 sqm

Plot: 817 m²

Bedrooms: 4 spacious and luminous, all with unobstructed views

Bathrooms: 3 elegant full bathrooms, equipped with high quality finishings

Location:

Located just minutes from the charming center of Sant Vicenç de Montalt, this architectural jewel offers a life of unparalleled comfort, with stunning sea views from every corner of the house.

Urbanization Supermaresme Golf, Sant Vicenç de Montalt (08349)

3 Minutes from the center: With all services, shopping and sports center.

5 minutes from the beach and the marina.

5 minutes from the golf course

30 km from the center of Barcelona

Equipment description:

Bioclimatic Design: An architectural concept that fuses elegance, functionality and comfort.

High ceilings: They offer a feeling of spaciousness and freedom in every room.

Large Windows: Equipped with low emissivity and solar control glass, they provide spectacular panoramic views.

SuperGradhermetic Roller and Adjustable Blinds: Guarantee optimal control of light and privacy.

SATE System: Innovative exterior thermal insulation system that enhances the energy efficiency of the home.

Interior Thermal and Acoustic Insulation: Incorporating ISOVER sand mineral wool for a serene and comfortable environment.

Natural Parquet Flooring: Exquisite oak planks, Kahrs Tierra model, that provide warmth and sophistication.

Underfloor Heating: An efficient system that provides comfort, with individual regulation in each room through Airzone.

Ducted Air Conditioning: Equipped with heat pump and independent regulation in each room, optimizing well-being with Airzone.

Aerothermal System: Provided with Vaillant's powerful technology, ensuring exceptional performance.

Built-in closets: Designed with high quality lining and an intelligently optimized interior distribution to maximize space.

Other information:

With a privileged location and exceptional features, this property presents itself as a true oasis. Enjoy:

Unobstructed views offering a constant visual delight, ideal for relaxing and enjoying the scenery.

Saltwater pool, perfect for cooling off on hot days, providing a softer experience for the skin.

Spacious terraces that invite you to spend long moments outdoors, all with baked painted railings in an elegant color that harmonizes with the windows and shutters.

Garden with many possibilities, a versatile space that can become a beautiful private paradise or a recreational area.

Two ample parking spaces that guarantee comfort and ease of access.

Every corner of this house has been designed with attention to detail, maximizing the sea views and ensuring an environment of comfort and privacy. The spaces are spacious and bright, intelligently distributed to provide an exceptional living experience for you and your family - an opportunity you won't want to miss!

images

_DSF7948



_DSF7944



_DSF7717



DJI_0731



_DSF7905



_DSF7915



_DSF7931



_DSF7935



_DSF7940



_DSF7957



_DSF78001



_DSF78311



_DSF7725



_DSF7727



_DSF7735



_DSF7737



_DSF7741



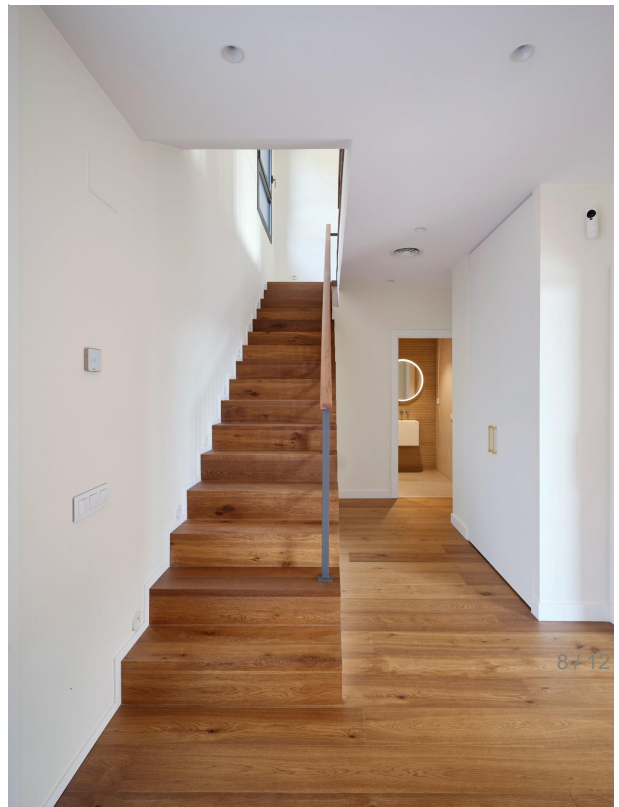
_DSF7746



_DSF7756



_DSF7759



_DSF7761



_DSF7762



_DSF7764



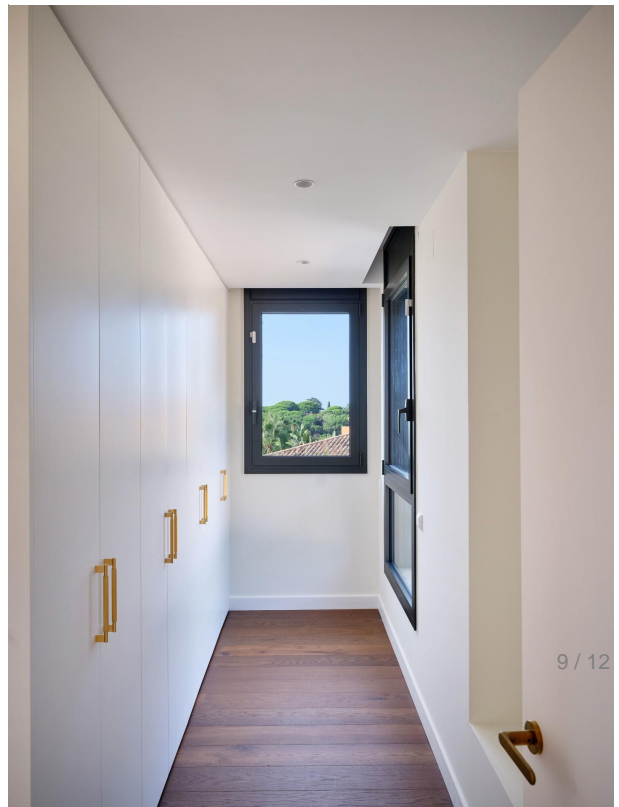
_DSF7775



_DSF7781



_DSF7786



_DSF7799



_DSF7838



_DSF7846



_DSF7854



_DSF7883



_DSF7886



_DSF7891



_DSF7893



_DSF7898



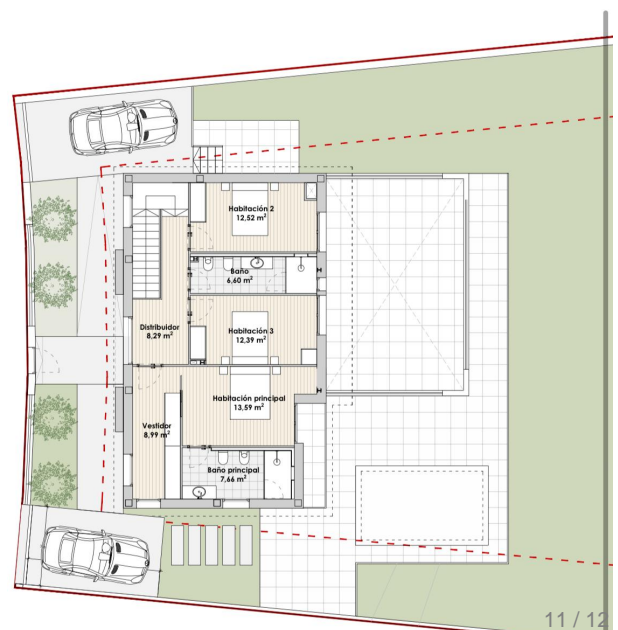
_DSF7899



_DSF7900



plano



PLANO DE PLANTA PRIMERA

plano



PLANO DE PLANTA BAJA