



**KENSINGTON**<sup>®</sup>  
Finest Properties International



## general:

---

<b>object number external:</b>	KBSW22028	<b>as from:</b>	28.11.2024
<b>usage:</b>	business	<b>marketing method:</b>	rent/lease
<b>property:</b>	Office / practices (office space)	<b>construction year:</b>	2024
<b>place:</b>	14656 Brieselang / Zeestow	<b>Office space:</b>	714,00 m <sup>2</sup>
<b>Storage space:</b>	1.022,00 m <sup>2</sup>	<b>Total space:</b>	1.736,00 m <sup>2</sup>
<b>Condition:</b>	first time use		

## prices:

---

<b>net rent:</b>	15.300,00 €	<b>broker's fee:</b>	2 Nettokaltmieten zzgl. 19% MwSt.
------------------	-------------	----------------------	-----------------------------------

## energy certificate:

---

<b>type of energy ID:</b>	BEDARF	<b>expiry date:</b>	2030-10-26
<b>age group:</b>	2014	<b>heating YOC:</b>	2020
<b>value class:</b>	B	<b>primary energy sources:</b>	LUFTWP

## contact person:

---

<b>company:</b>	Franchisepartner	<b>name:</b>	Sven Rhein
<b>street:</b>	Zehlendorfer Str. 21	<b>place:</b>	14513 Teltow
<b>phone:</b>	+49 172 321 08 31	<b>fax number:</b>	+49 (0) 3328 428 95 98
<b>Email:</b>	sven.rhein@kensington-international.com		

## Infrastructure:

---

# images

Ansicht Vorn



Ansicht Seite



Vogelperspektive



Halle Ansicht Hinten & Seite



Halle Ansicht Hinten



Innen



Büro



Innen



Dusche



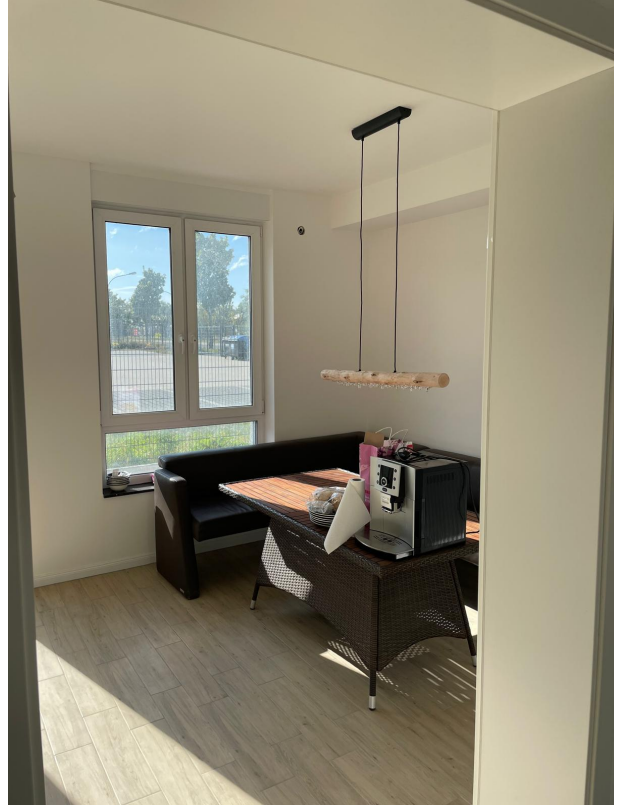
Aussenansicht Straße



WC



Büro





Büro

