



**KENSINGTON**<sup>®</sup>  
Finest Properties International



## general:

---

<b>object number external:</b>	KBSW24050_A	<b>as from:</b>	02.09.2024
<b>usage:</b>	habitation	<b>marketing method:</b>	purchase
<b>property:</b>	flat	<b>construction year:</b>	1992
<b>place:</b>	14050 Berlin	<b>living space:</b>	161,00 m <sup>2</sup>
<b>Office space:</b>	161,00 m <sup>2</sup>	<b>Dividable from:</b>	161,00 m <sup>2</sup>
<b>Total space:</b>	161,00 m <sup>2</sup>	<b>Number of Rooms:</b>	5,0
<b>Condition:</b>	as new		

## prices:

---

<b>purchase price:</b>	835.000,00 €	<b>broker's fee:</b>	3,57% inkl. 19% MwSt.
------------------------	--------------	----------------------	-----------------------

## energy certificate:

---

<b>type of energy ID:</b>	VERBRAUCH	<b>expiry date:</b>	2030-07-25
<b>age group:</b>	2014	<b>heating YOC:</b>	1992
<b>value class:</b>	E	<b>primary energy sources:</b>	ERDGAS_LEICHT
<b>energy consumption value:</b>	144.00 kWh/m <sup>2</sup> /a		

## contact person:

---

<b>name:</b>	Susanne Murri	<b>street:</b>	Zehlendorfer Straße 21
<b>place:</b>	14513 Teltow	<b>phone:</b>	0170 80271 49
<b>fax number:</b>	+49 (0) 3328 428 95 98	<b>Email:</b>	susanne.murri@kensington-international.com

## Infrastructure:

---

# images

Ansicht Haus



Terrasse



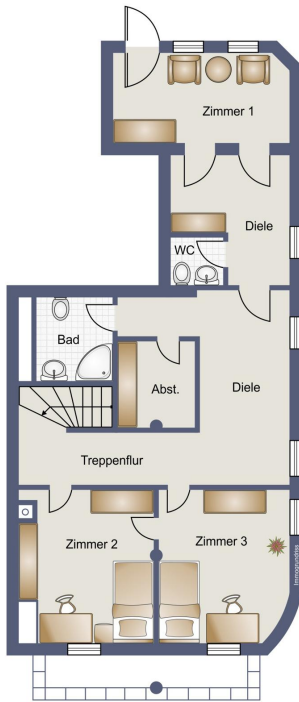
Wohnraum/Büro



Grundriss oben



Grundriss unten



Arbeitsplatz



Wohnraum/Büro



Wohnraum unten



Flur unten



Wohnraum/Büro



Gäste-WC/Dusche



Gäste-WC



Flur



Treppenhaus



Balkone



Küche



Küche



Eingangsbereich



Wohnraum/Büro



Wohnraum/Büro



Balkon

