



KENSINGTON[®]
Finest Properties International



general:

| | | | |
|--------------------------------|-----------------------------|-----------------------------|-----------------------|
| object number external: | Kensington_KBT_321 | as from: | 04.01.2025 |
| usage: | habitation | marketing method: | purchase |
| property: | flat | construction year: | 2023 |
| place: | 16775 Stechlin / Neuglobsow | living space: | 178,85 m ² |
| Floor space: | 19,60 m ² | Number of Rooms: | 4,0 |
| Number of bedrooms: | 3,0 | Number of bathrooms: | 2,0 |
| Condition: | as new | | |

prices:

purchase price: 699.000,00 €

energy certificate:

| | | | |
|-----------------------------|-----------------------------|--------------------------------|------------|
| type of energy ID: | BEDARF | expiry date: | 2033-12-08 |
| age group: | 2014 | heating YOC: | 2023 |
| value class: | B | primary energy sources: | GAS |
| final energy demand: | 68.80 kWh/m ² /a | | |

contact person:

| | | | |
|---------------|---|----------------|-----------------|
| name: | Mathias Becker | street: | Brunowstraße 52 |
| place: | 13507 Berlin | phone: | +49 1737830555 |
| Email: | Mathias.becker@kensington-international.com | | |

Infrastructure:

images

Hausansicht



EG Zimmer 1



EG Zimmer 2



EG DU Bad



OG Wohnen



OG Wohnen



OG Wohnen Essen



OG Küche Durchreiche



OG Küche



OG Küche



OG Zimmer 3



OG Wannen Bad



OG Wannen Bad



OG Dachterrasse



Atrium



Atrium "Quelle"



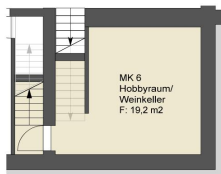
Dagowsee mit Haus



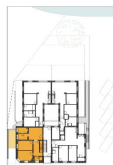
Lage am Dagowsee



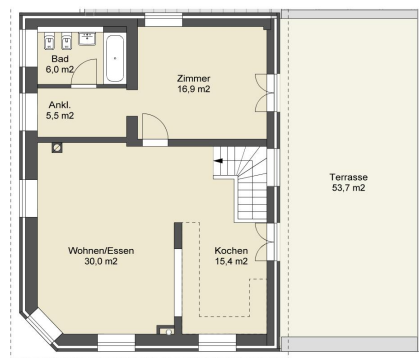
Grundriss Kellergeschoss



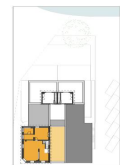
WE 6
Wohnfläche 144,6 m²
+ anr. Terrasse 34,2 m²
WFL gesamt 178,8 m²



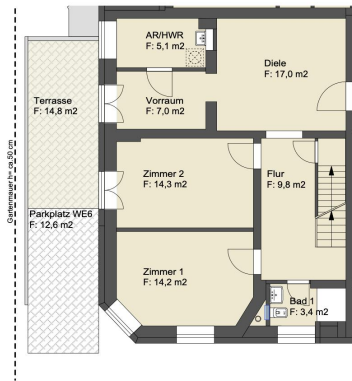
Grundriss Erdgeschoss



WE 6
Wohnfläche 144,6 m²
+ anr. Terrasse 34,2 m²
WFL gesamt 178,8 m²



Grundriss Obergeschoss



| | |
|-----------------|----------------------|
| WE 6 | |
| Wohnfläche | 144,6 m ² |
| + anr. Terrasse | 34,2 m ² |
| WFL gesamt | 178,8 m ² |

