



**KENSINGTON**<sup>®</sup>  
Finest Properties International



## general:

---

<b>object number external:</b>	Kensington_KLI_145	<b>as from:</b>	30.01.2025
<b>usage:</b>	habitation	<b>marketing method:</b>	rent/lease
<b>property:</b>	flat	<b>construction year:</b>	2021
<b>place:</b>	88138 Weißensberg	<b>living space:</b>	96,00 m <sup>2</sup>
<b>Number of Rooms:</b>	4,0	<b>Number of bedrooms:</b>	3,0
<b>Number of bathrooms:</b>	1,0	<b>Number of sep. bathrooms:</b>	1,0
<b>number of parking spaces:</b>	2,0	<b>Condition:</b>	as new

## prices:

---

<b>net rent:</b>	1.630,00 €	<b>additional costs:</b>	200,00 €
<b>outside parking space:</b>	25,00 €	<b>rent, utilities included:</b>	1.880,00 €
<b>bail:</b>	4.890,00 €		

## energy certificate:

---

**beaconing:** solar

## contact person:

---

<b>company:</b> KENSINGTON Finest Properties International	<b>name:</b>	Michaela Beinke
<b>street:</b> Maximilianstr. 50	<b>place:</b>	88131 Lindau (Bodensee)
<b>phone:</b> +49 15167205863	<b>Email:</b>	michaela.beinke@kensington-international.com
<b>www:</b> www.kensington-lindau.com		

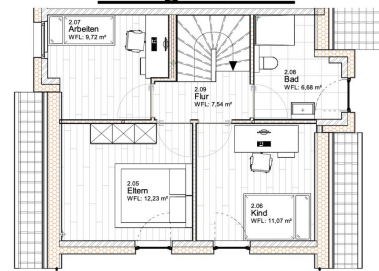
## Infrastructure:

---

images



**Obergeschoss**



**Erdgeschoss**

