



**KENSINGTON**<sup>®</sup>

Finest Properties International



## general:

---

<b>object number external:</b>	Kensington_KMD_343	<b>as from:</b>	02.12.2024
<b>usage:</b>	habitation	<b>marketing method:</b>	purchase
<b>property:</b>	residential rental property	<b>construction year:</b>	1977
<b>place:</b>	38173 Sickte	<b>living space:</b>	237,00 m <sup>2</sup>
<b>Floor space:</b>	117,00 m <sup>2</sup>	<b>rentable space:</b>	237,00 m <sup>2</sup>
<b>Number of Rooms:</b>	8,0	<b>Number of bedrooms:</b>	6,0
<b>Number of bathrooms:</b>	2,0	<b>Number of sep. bathrooms:</b>	1,0
<b>Condition:</b>	groomed		

## prices:

---

<b>purchase price:</b>	312.000,00 €	<b>broker's fee:</b>	3,57
------------------------	--------------	----------------------	------

## energy certificate:

---

<b>type of energy ID:</b>	VERBRAUCH	<b>expiry date:</b>	2033-11-12
<b>age group:</b>	2014	<b>heating YOC:</b>	1977
<b>value class:</b>	H	<b>beaconing:</b>	gas
<b>primary energy sources:</b>	ERDGAS_LEICHT	<b>energy consumption value:</b>	276.40 kWh/m <sup>2</sup> /a

## contact person:

---

<b>company:</b>	LIC Island Dream Mallorca S.L.	<b>name:</b>	Michaela Lohde-Sauer
<b>street:</b>	Carrer de Palma 28	<b>place:</b>	07650 Santanyi
<b>phone:</b>	+34 670 27 56 68	<b>Email:</b>	santanyi@kensington-international.com

## Infrastructure:

---

# images

---

Eingang



Wohnzimmer Erdgeschoss



Balkon Erdgeschoss



Küche Erdgeschoss



Bad Erdgeschoss



Flur zu den Schlafzimmern Erdgeschoss



Schlafzimmer Erdgeschoss



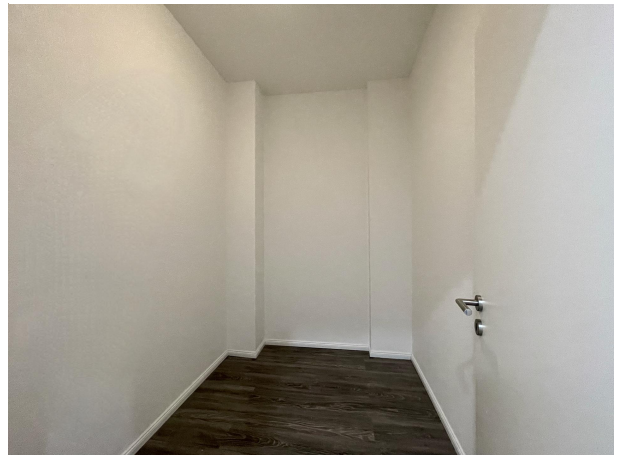
Schlafzimmer Erdgeschoss



Schlafzimmer Erdgeschoss



Abstellraum Erdgeschoss



Gäste-WC Erdgeschoss



Eingang Wohnung 1. Obergeschoss



Wohnzimmer 1. Obergeschoss



Balkon 1. Obergeschoss



Küche 1. Obergeschoss



Esszimmer 1. Obergeschoss



Badezimmer 1. Obergeschoss



Flur 1. Obergeschoss



Schlafzimmer 1. Obergeschoss



Schlafzimmer 1. Obergeschoss



Schlafzimmer 1. Obergeschoss

