



**KENSINGTON**<sup>®</sup>

Finest Properties International



## general:

---

<b>object number external:</b>	Kensington_KMS_337	<b>as from:</b>	16.05.2024
<b>usage:</b>	habitation	<b>marketing method:</b>	purchase
<b>property:</b>	House	<b>construction year:</b>	1986
<b>place:</b>	48324 Sendenhorst	<b>living space:</b>	107,66 m <sup>2</sup>
<b>Floor space:</b>	41,68 m <sup>2</sup>	<b>Total size of site:</b>	237,00 m <sup>2</sup>
<b>Number of Rooms:</b>	4,0	<b>Number of bedrooms:</b>	3,0
<b>Number of bathrooms:</b>	1,0	<b>Number of sep. bathrooms:</b>	1,0
<b>number of parking spaces:</b>	1,0	<b>Condition:</b>	groomed

## prices:

---

<b>purchase price:</b>	348.500,00 €	<b>broker's fee:</b>	3,57%
------------------------	--------------	----------------------	-------

## energy certificate:

---

<b>type of energy ID:</b>	VERBRAUCH	<b>expiry date:</b>	2033-04-10
<b>age group:</b>	2014	<b>heating YOC:</b>	2020
<b>value class:</b>	C	<b>beaconing:</b>	gas
<b>primary energy sources:</b>	GAS	<b>energy consumption value:</b>	77.50 kWh/m <sup>2</sup> /a

## contact person:

---

<b>company:</b>	Solima Immobilien-Marketing GmbH & Co. KG	<b>name:</b>	Roland Füchtenhans
<b>street:</b>	Sassenberger Straße 5	<b>place:</b>	48231 Warendorf
<b>phone:</b>	+49 2581 9 66 55	<b>Email:</b>	muenster@kensington-international.com
<b>www:</b>	www.kensington-muenster.com		

## Infrastructure:

Airport at :

30 km

## images

Wohnen



Wohnen



Wohnen



Wohndetail



Treppendetail



Flur OG



Treppendetail



Kinderzimmer



Kinderzimmer



Kinderzimmer



Kinderzimmer



Blick über Veranda



Bad



Bad



Schlafen



Schlafen



Spielraum Spitzboden



Spielraum Spitzboden



Hausansicht



Garten



Garten



Veranda



Veranda



Küche



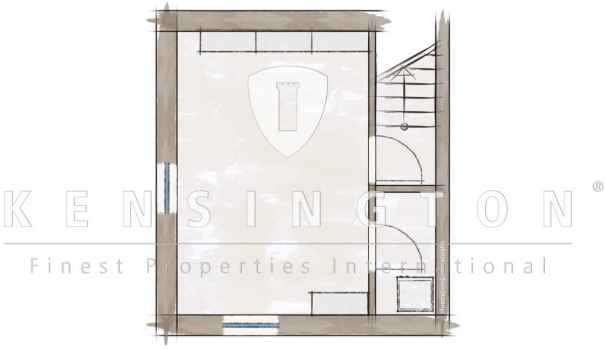
Küche



Küchendetall



Keller



Exposéplan, nicht maßstäblich



Erdegeschoss



Exposéplan, nicht maßstäblich





Obergeschoss

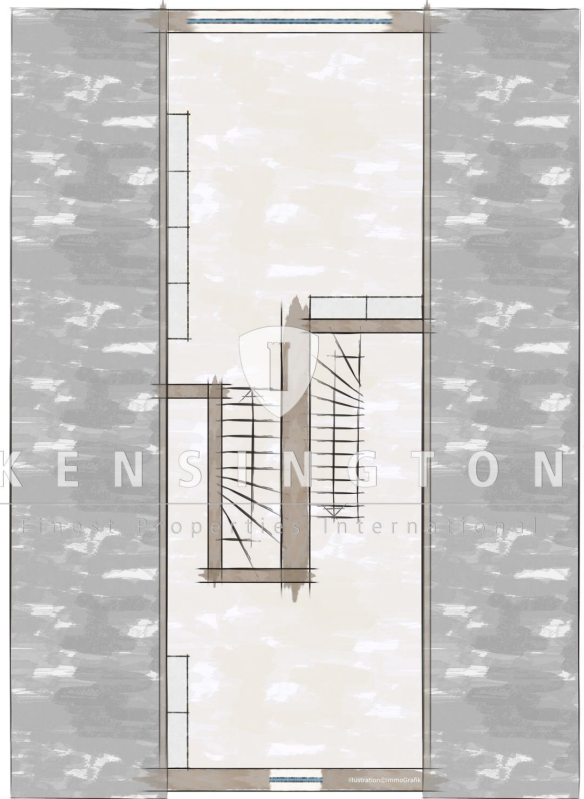


KENSINGTON®  
Finest Properties International

Exposéplan, nicht maßstäblich



Spitzboden



KENSINGTON®  
Finest Properties International

Exposéplan, nicht maßstäblich

