



KENSINGTON[®]
Finest Properties International



general:

| | | | |
|----------------------------------|-----------------------|----------------------------------|-----------------------|
| object number external: | Kensington_KMS_360 | as from: | 20.12.2024 |
| usage: | habitation | marketing method: | purchase |
| property: | House | construction year: | 1957 |
| place: | 48231 Warendorf | living space: | 294,97 m ² |
| Floor space: | 182,46 m ² | Total size of site: | 851,00 m ² |
| Number of Rooms: | 11,0 | Number of bedrooms: | 7,0 |
| Number of bathrooms: | 3,0 | Number of sep. bathrooms: | 1,0 |
| number of parking spaces: | 3,0 | Condition: | groomed |

prices:

| | | | |
|------------------------|--------------|----------------------|-------|
| purchase price: | 544.800,00 € | broker's fee: | 3,57% |
|------------------------|--------------|----------------------|-------|

energy certificate:

| | |
|-------------------|-----|
| beaconing: | gas |
|-------------------|-----|

contact person:

| | | | |
|-----------------|-------------------------------------------|---------------|---------------------------------------|
| company: | Solima Immobilien-Marketing GmbH & Co. KG | name: | Roland Füchtenhans |
| street: | Sassenberger Straße 5 | place: | 48231 Warendorf |
| phone: | +49 2581 9 66 55 | Email: | muenster@kensington-international.com |
| www: | www.kensington-muenster.com | | |

Infrastructure:

| | |
|------------------|-------|
| Highway : | 20 km |
|------------------|-------|

images

Wohnen Haus 2



Veranda Haus 2



Küche Haus 2



Küche Haus 2



WC Haus 2



Ansicht



Flur Haus 2



Bad Haus 2



Schlafen Haus 2



Gartenblick



Kind Haus 2



Flur Haus 2



Ansicht



Spitzboden Haus 2



Ausblick



Keller



Keller Haus 1



Küche Haus 1 EG



Balkon Haus 1



Ansicht



Wohnen Haus 1 DG



Bad Haus 1 DG



Küche Haus 1 DG



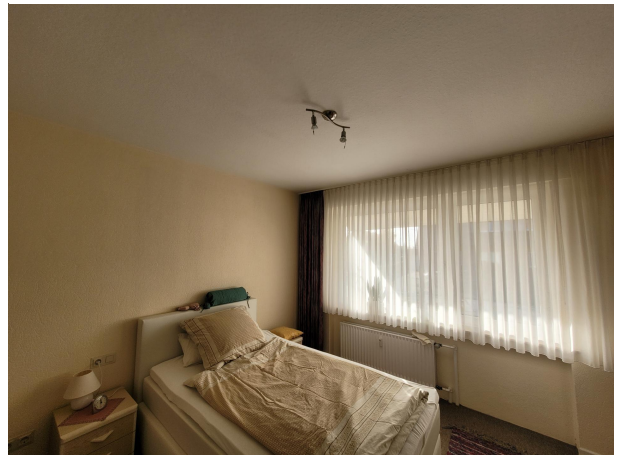
Wohnen Haus 1 EG



Wohnen Haus 1 EG



Schlafen Haus 1 EG



Bad Haus 1 EG

