



**KENSINGTON**<sup>®</sup>

Finest Properties International



## general:

---

<b>object number external:</b>	Kensington_KPMP_308	<b>as from:</b>	25.03.2024
<b>usage:</b>	habitation	<b>marketing method:</b>	purchase
<b>property:</b>	House	<b>construction year:</b>	2022
<b>place:</b>	81477 München - Obersendling / Solln	<b>available from:</b>	Ende 2023
<b>living space:</b>	211,66 m <sup>2</sup>	<b>Floor space:</b>	287,00 m <sup>2</sup>
<b>Total size of site:</b>	339,97 m <sup>2</sup>	<b>Number of Rooms:</b>	6,0
<b>Number of bathrooms:</b>	3,0	<b>number of parking spaces:</b>	1,0
<b>Condition:</b>	first time use		

## prices:

---

<b>purchase price:</b>	1.899.500,00 €	<b>broker's fee:</b>	provisionsfrei
------------------------	----------------	----------------------	----------------

## energy certificate:

---

## contact person:

---

<b>company:</b>	KENSINGTON	<b>name:</b>	Sonja Schneider
<b>street:</b>	Bahnhofstraße 16 a	<b>place:</b>	82152 Planegg
<b>phone:</b>	0172-6005967	<b>fax number:</b>	089-54858080
<b>Email:</b>	sonja.schneider@kensington-international.com	<b>www:</b>	www.kensington-muenchen.com

## Infrastructure:

---

# images

Illustration Außenansicht straßenseitig



Illustration Außenansicht straßenseitig



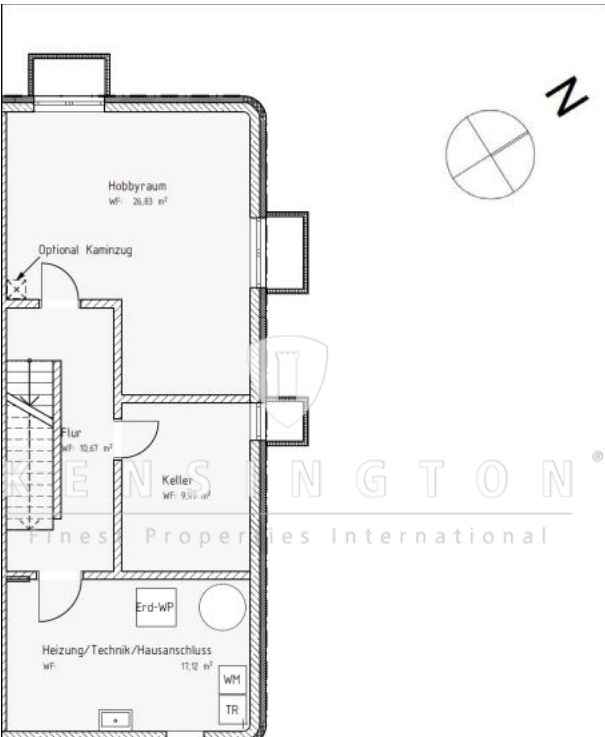
Illustration Außenansicht Garten



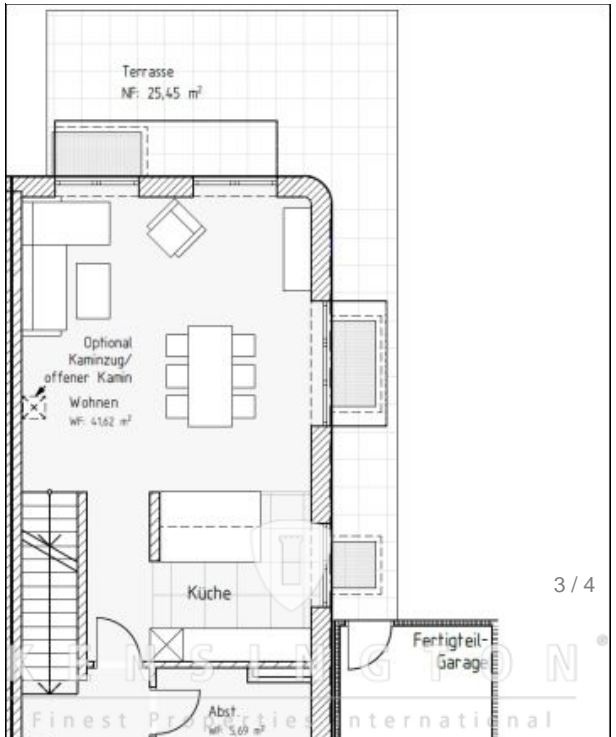
Illustration Außenansicht Garten



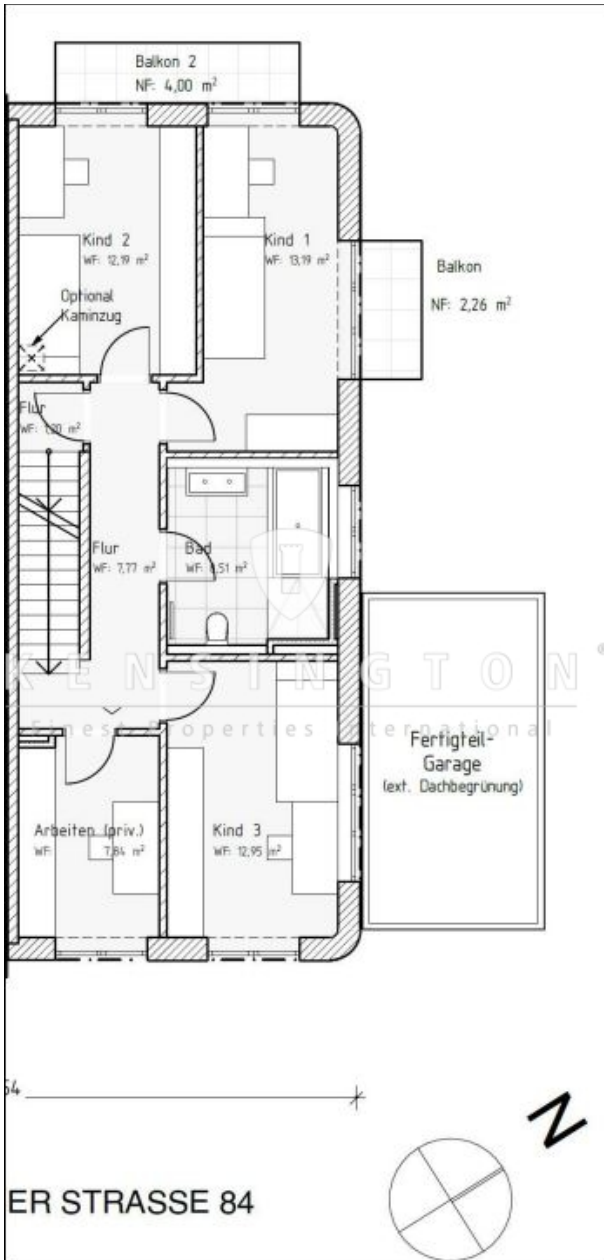
Grundriss Kellergeschoss



Grundriss Erdgeschoss



Grundriss Obergeschoss



Grundriss Dachgeschoss

