



**KENSINGTON**<sup>®</sup>

Finest Properties International



## general:

---

<b>object number external:</b>	Kensington_KPMP_431	<b>as from:</b>	16.11.2023
<b>usage:</b>	habitation	<b>marketing method:</b>	purchase
<b>property:</b>	House	<b>construction year:</b>	2025
<b>place:</b>	81673 München - Berg am Laim	<b>available from:</b>	4. Quartal 2025
<b>living space:</b>	126,35 m <sup>2</sup>	<b>Floor space:</b>	161,26 m <sup>2</sup>
<b>Total size of site:</b>	122,48 m <sup>2</sup>	<b>Number of Rooms:</b>	5,5
<b>number of parking spaces:</b>	1,0	<b>Condition:</b>	first time use

## prices:

---

<b>purchase price:</b>	1.249.500,00 €	<b>broker's fee:</b>	provisionsfrei
------------------------	----------------	----------------------	----------------

## energy certificate:

---

<b>beaconing:</b>	air heat pump
-------------------	---------------

## contact person:

---

<b>company:</b>	KENSINGTON	<b>name:</b>	Sonja Schneider
<b>street:</b>	Bahnhofstraße 16 a	<b>place:</b>	82152 Planegg
<b>phone:</b>	0172-6005967	<b>fax number:</b>	089-54858080
<b>Email:</b>	sonja.schneider@kensington-international.com	<b>www:</b>	www.kensington-muenchen.com

## Infrastructure:

---

# images

Illustration Außenansicht



Illustration Außenansicht



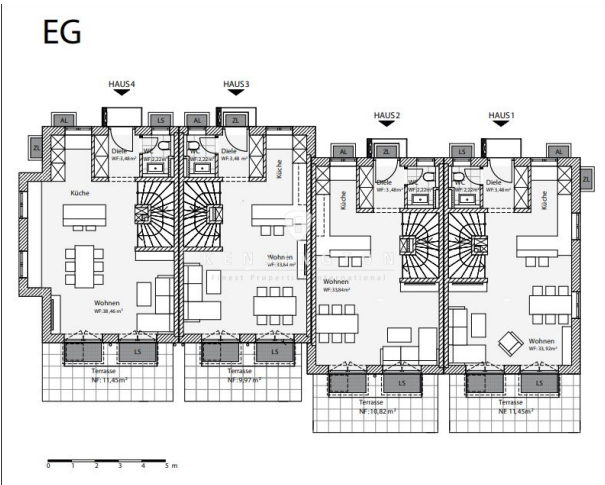
Illustration Außenansicht



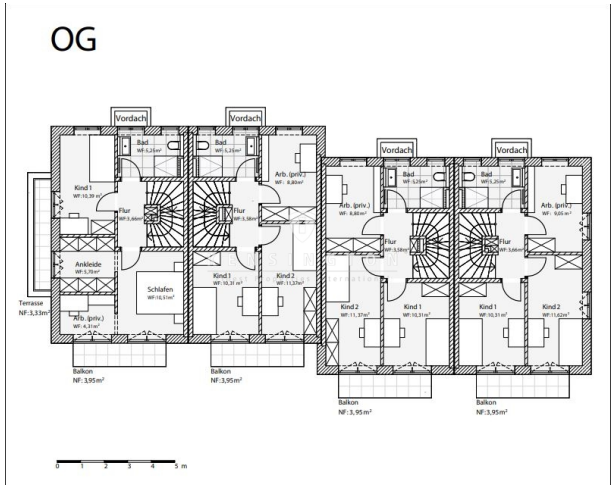
Illustration Außenansicht



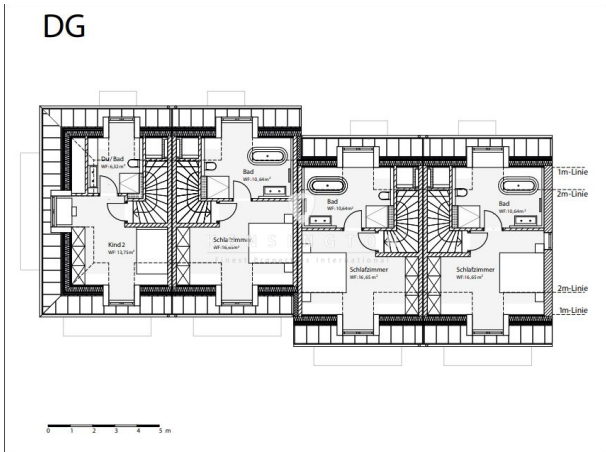
Grundriss EG



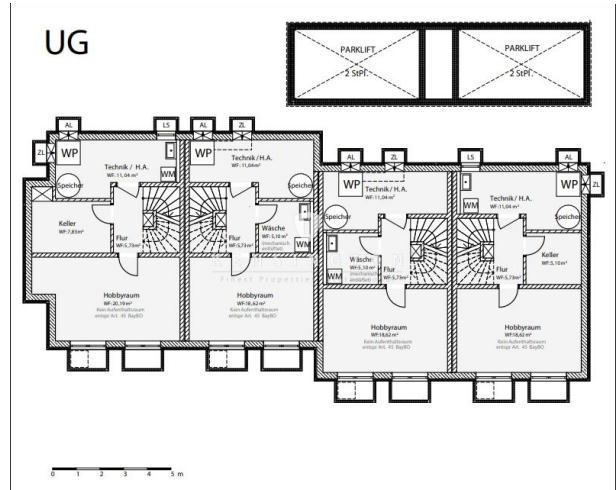
Grundriss OG



Grundriss DG



Grundriss UG



Übersicht Haus 1-4

