



**KENSINGTON**<sup>®</sup>

Finest Properties International



## general:

---

<b>object number external:</b>	Kensington_KPMP_487	<b>as from:</b>	13.05.2024
<b>usage:</b>	habitation	<b>marketing method:</b>	purchase
<b>property:</b>	flat	<b>construction year:</b>	2026
<b>place:</b>	80638 München -Nymphenburg	<b>available from:</b>	nach Vereinbarung
<b>living space:</b>	535,00 m <sup>2</sup>	<b>floor:</b>	2
<b>Number of Rooms:</b>	11,0	<b>Number of bedrooms:</b>	8,0
<b>Number of bathrooms:</b>	6,0	<b>Number of sep. bathrooms:</b>	1,0
<b>number of parking spaces:</b>	4,0	<b>Condition:</b>	first time use

## prices:

---

<b>purchase price:</b>	13.583.000,00 €	<b>broker's fee:</b>	provisionsfrei
------------------------	-----------------	----------------------	----------------

## energy certificate:

---

## contact person:

---

<b>company:</b>	KENSINGTON	<b>name:</b>	Sonja Schneider
<b>street:</b>	Bahnhofstraße 16 a	<b>place:</b>	82152 Planegg
<b>phone:</b>	0172-6005967	<b>fax number:</b>	089-54858080
<b>Email:</b>	sonja.schneider@kensington-international.com	<b>www:</b>	www.kensington-muenchen.com

## Infrastructure:

---

## images

Illustration Villa Frontansicht



Illustration Villa Vorderansicht



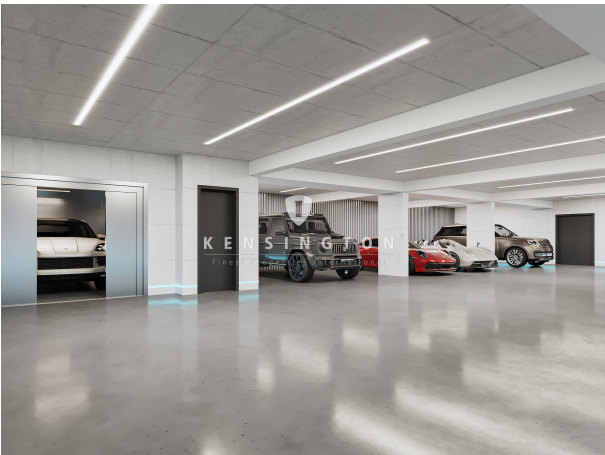
Illustration Dachgeschosswohnung



Illustration Dachterrasse



Illustration Tiefgarage

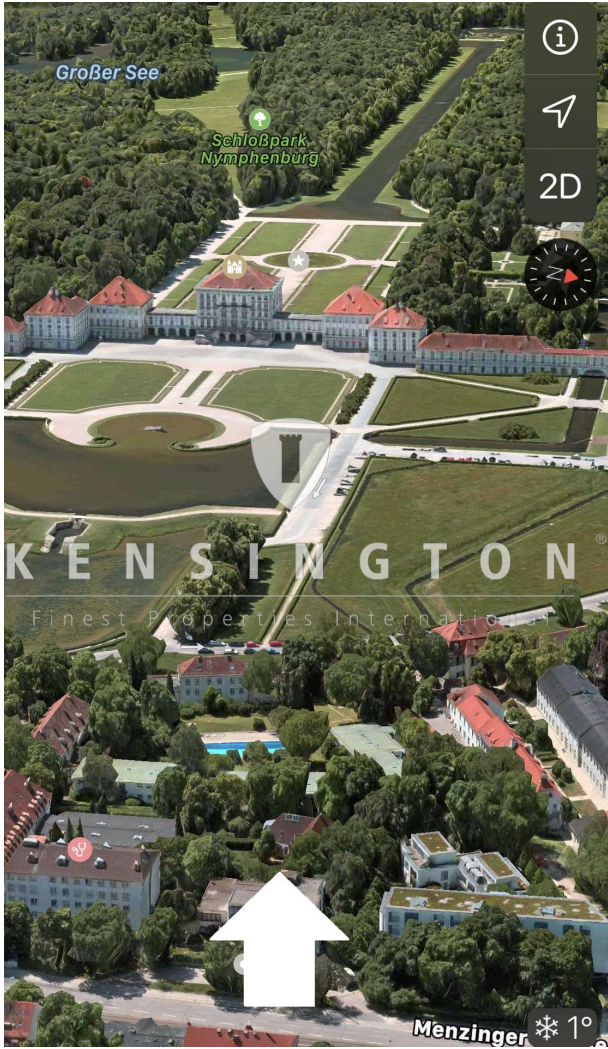


Umgebung, Schloss Nymphenburg

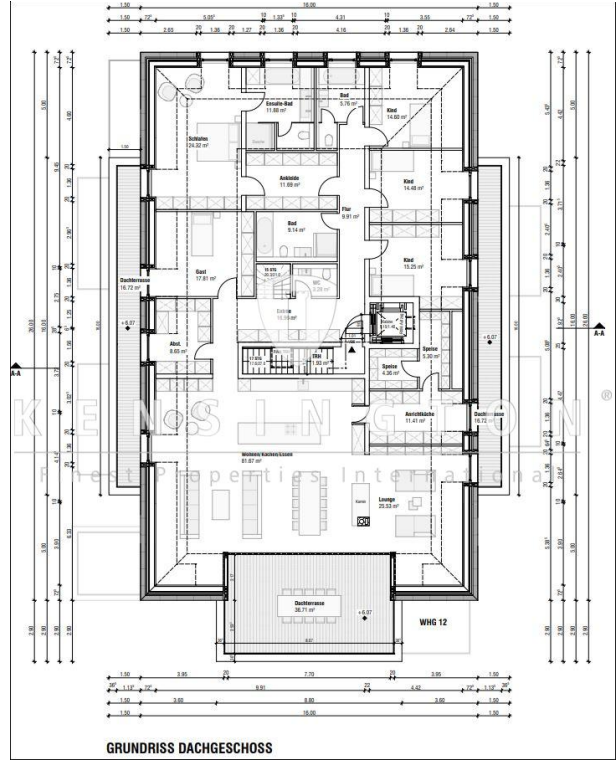




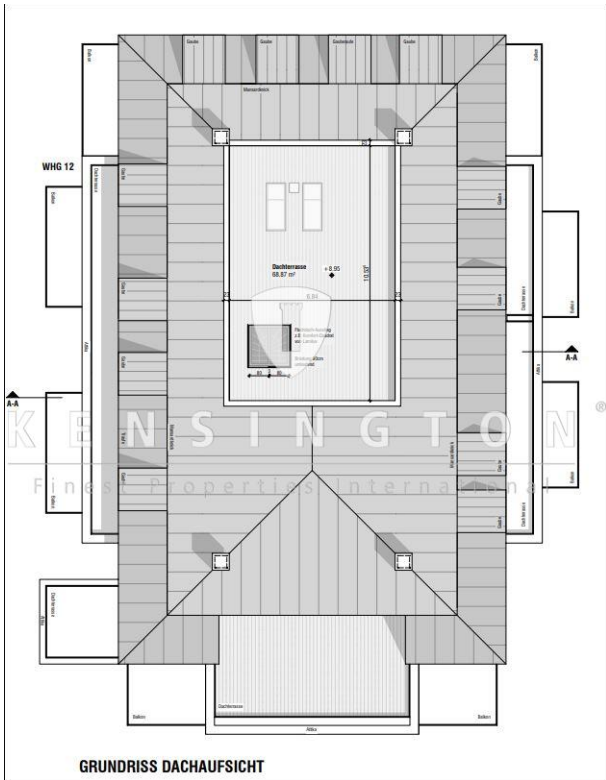
### Umgebung Vogelperspektive



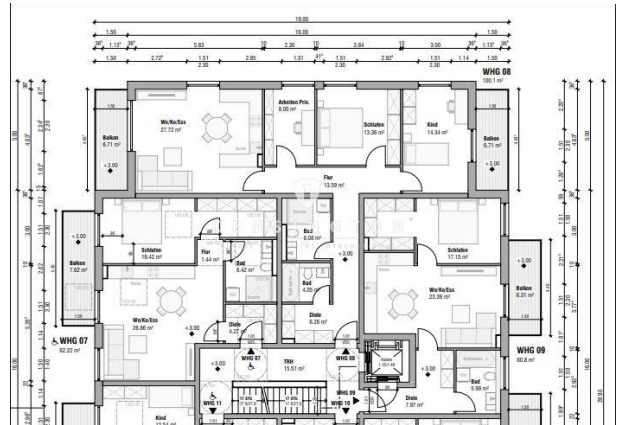
### Grundriss DG



Grundriss Dachaufsicht



Grundriss Whg. 8 und 9



# Grundriss Obergeschoss gesamt

