



KENSINGTON[®]
Finest Properties International



general:

| | | | |
|----------------------------------|--------------------------|-----------------------------|-----------------------|
| object number external: | Kensington_KRW_301 | as from: | 13.12.2024 |
| usage: | habitation | marketing method: | purchase |
| property: | House | construction year: | 1608 |
| place: | 27257 Sudwalde | living space: | 754,36 m ² |
| Floor space: | 640,00 m ² | rentable space: | 754,36 m ² |
| Total size of site: | 14.600,00 m ² | Number of Rooms: | 33,0 |
| Number of bedrooms: | 17,0 | Number of bathrooms: | 9,0 |
| number of parking spaces: | 11,0 | Condition: | part / full renovated |

prices:

broker's fee: 5,95 % inkl. 19 % gesetzl. MwSt.

energy certificate:

| | | | |
|----------------------------------|------------------------------|--------------------------------|------------|
| type of energy ID: | VERBRAUCH | expiry date: | 2031-04-08 |
| age group: | 2014 | value class: | D |
| beaconing: | gas | primary energy sources: | GAS |
| energy consumption value: | 118.00 kWh/m ² /a | | |

contact person:

| | | | |
|-----------------|----------------------------------|---------------|--|
| company: | Finest Properties Rotenburg GmbH | name: | Paulina Mikolajczuk |
| street: | Harburger Straße 8 | place: | 27356 Rotenburg (Wümme) |
| phone: | 0170 680 4669 | Email: | paulina.mikolajczuk@kensington-international.com |

Infrastructure:

Bus at : 2 km **Intercity train station at :** 8 km

images

Flur Wohnung EG rechts



Ruheoase mit Pferden im Garten Wohnung EG rechts



Terrasse Wohnung EG rechts



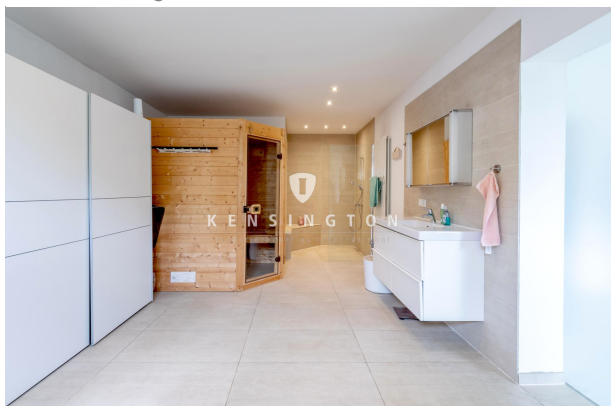
Garten/Außenbereich



Wohnzimmer Wohnung EG links



Bad Wohnung EG links



Appartment



Bad Appartment



Weiden/Außenbereich



Weiden/Außenbereich



Wohnhaus Rückseitig



Lagerfläche Halle

