



**KENSINGTON**<sup>®</sup>

Finest Properties International



## general:

---

<b>object number external:</b>	KMS_357	<b>as from:</b>	23.12.2024
<b>usage:</b>	habitation	<b>marketing method:</b>	purchase
<b>property:</b>	House	<b>construction year:</b>	1964
<b>place:</b>	49549 Ladbergen	<b>living space:</b>	171,16 m <sup>2</sup>
<b>Floor space:</b>	71,58 m <sup>2</sup>	<b>Total size of site:</b>	800,00 m <sup>2</sup>
<b>Number of Rooms:</b>	6,0	<b>Number of bedrooms:</b>	4,0
<b>Number of bathrooms:</b>	1,0	<b>Number of sep. bathrooms:</b>	1,0
<b>number of parking spaces:</b>	4,0	<b>Condition:</b>	part / full renovated

## prices:

---

<b>purchase price:</b>	388.500,00 €	<b>broker's fee:</b>	3,57%
------------------------	--------------	----------------------	-------

## energy certificate:

---

<b>beaconing:</b>	oil
-------------------	-----

## contact person:

---

<b>company:</b>	Solima Immobilien-Marketing GmbH & Co. KG	<b>name:</b>	Roland Füchtenhans
<b>street:</b>	Sassenberger Straße 5	<b>place:</b>	48231 Warendorf
<b>phone:</b>	+49 2581 9 66 55	<b>Email:</b>	muenster@kensington-international.com
<b>www:</b>	www.kensington-muenster.com		

## Infrastructure:

---

<b>Highway :</b>	1500 km
------------------	---------

# images

Ansicht



Wohnen



Wohnen



Küche





Küche



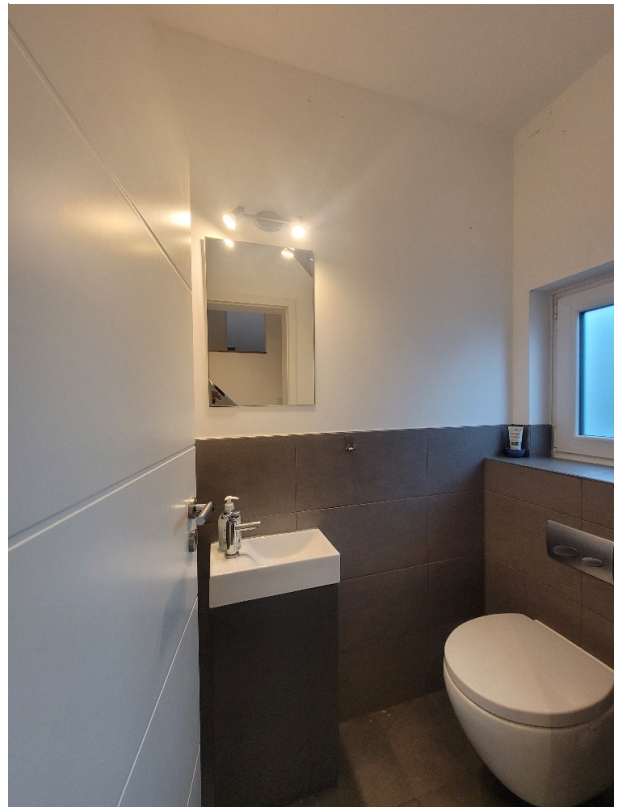
Wintergarten



Arbeitszimmer



Gäste-WC





Treppenaufgang



Flurblick



Kinderzimmer



Wintergarten



Bad



Bad



Kinderzimmer



Ankleide





Schlafen



Schlafen



Ansicht



Ankleide



Ausblick



Haus Front





Keller



Garten - Wintergarten



Anblick



Einfriedung



Wohnen



Erdgeschoss

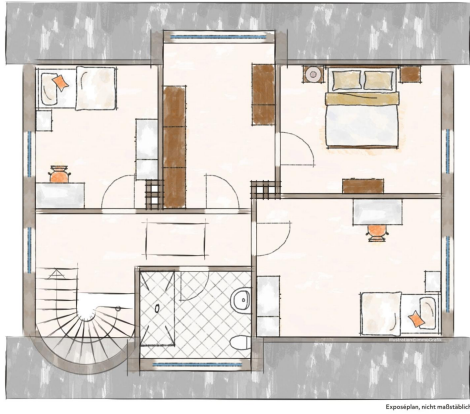
Erdgeschoss





## Dachgeschoss

### Dachgeschoss



## Kellergeschoss

### Kellergeschoss

