

Large penthouse with terraces & pool in “Zona Colegios”, Palma de Mallorca



general:

object number external:	KPP07670	as from:	07.08.2025
usage:	habitation	marketing method:	purchase
property:	flat	construction year:	1995
place:	07013 Palma de Mallorca	living space:	305,00 m²
Floor space:	541,00 m²	floor:	3
Number of Rooms:	8,0	Number of bedrooms:	5,0
Number of bathrooms:	4,0	number of parking spaces:	1,0
Condition:	groomed		

prices:

purchase price:	1.650.000,00 €
-----------------	----------------

energy certificate:

value class:	E	beaconing:	gas
primary energy sources:	Gas		

contact person:

company:	KENSINGTON Palma	name:	KENSINGTON Palma
street:	C/ Conquistador 8, bajo	place:	07001 Palma de Mallorca
www:	www.kensington-palma.com		

Infrastructure:

Description:

Large PENTHOUSE with terraces, pool and parking spaces in SON DAMETO, Palma de Mallorca. The neighbourhood is part of the 'ZONA COLEGIOS', and many international schools as well as the city centre are within easy reach. The flat occupies the top two floors of a well-kept complex with lift, underground parking and a COMMUNITY POOL 14 meters long.

It is a SPACIOUS FLAT in well-kept condition. It has windows on three sides and a separate wing for the children. There are two marvellous SOUTH-FACING TERRACES, one in front of the living room (168m²), another (47m²) in the children's wing. The price includes 1 UNDERGROUND PARKING SPACE AND 1 STOREROOM. Additional parking spaces are available against surcharge.

Layout of the duplex flat (approx. 305m²): on the lower level, hallway, living/dining area, eat-in kitchen, guest toilet, 2 bedrooms (master with dressing room), 3 bathrooms (2 en suite), ironing room (or staff bedroom), utility room, pantry; upstairs, family room, office, 2 bedrooms, 1 bathroom.

Features: security door, real wood parquet, fireplaces, fitted wardrobes, double glazing, roller shutters, AC hot/cold, CENTRAL HEATING, alarm, outdoor kitchen, awnings, LIFT.

Please ask us for further information or to arrange a viewing. We will not assume any liability for the information provided. Kensington reference: KPP07670

images

Kitchen dining area





Community pool



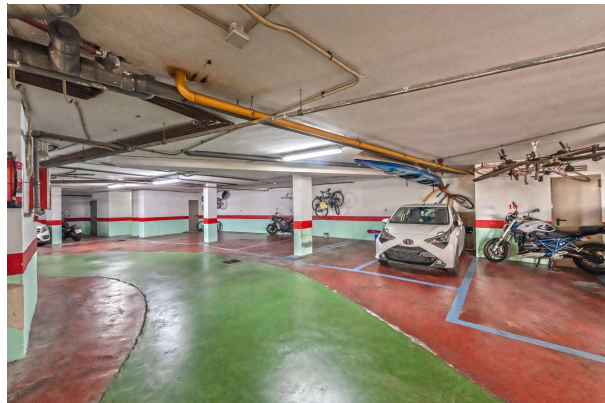
Family room



Master bathroom



Garage



Entrance area



Master bedroom



Bedroom 2



2nd terrace



Bedroom 4



Master bedroom



Bedroom 3



Bathroom 2

