

Luxurious villa - with vacation rental license



general:

object number external:	KSP01687	as from:	21.07.2025
usage:	habitation	marketing method:	purchase
property:	House	construction year:	1996
place:	07180 Santa Ponsa	living space:	300,00 m²
Total size of site:	900,00 m²	Number of Rooms:	5,0
Number of bedrooms:	4,0	Number of bathrooms:	4,0
number of parking spaces:	2,0	Condition:	part / full renovated

prices:

purchase price:	3.450.000,00 €
-----------------	----------------

energy certificate:

beaconing:	electric	primary energy sources:	Strom
------------	----------	-------------------------	-------

contact person:

company:	Son Vida Finest Properties S.L.	name:	Karina Maure
position:	Sales Agent	street:	Avda. Rey Jaume I, No. 109, Local 2
place:	07180 Santa Ponsa	www:	www.kensington-santaponsa.com

Infrastructure:

Description:

This stunning villa in the sought-after area of Santa Ponsa offers the perfect blend of comfort, elegance, and investment potential. Set on a generous 900m² plot, the property boasts a spacious 300m² living area, providing ample room for relaxation and entertainment.

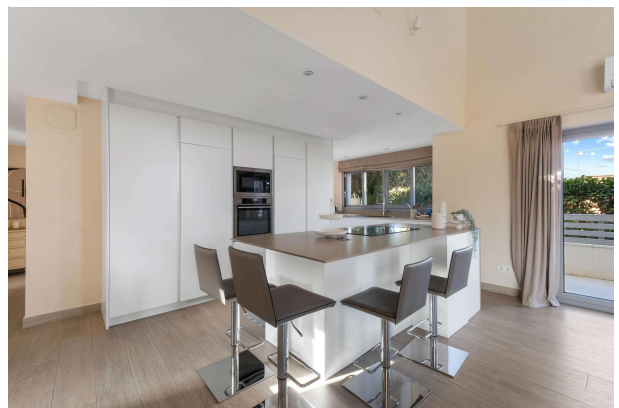
Inside, the villa features four beautifully designed bedrooms, each with its own en-suite bathroom, ensuring privacy and luxury for all guests. The open-plan living and dining areas are flooded with natural light, seamlessly connecting to the

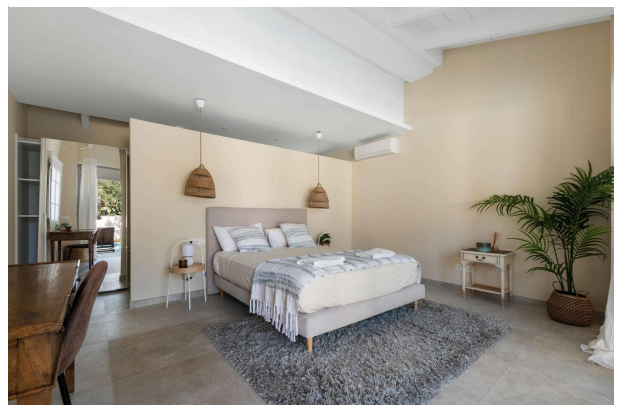
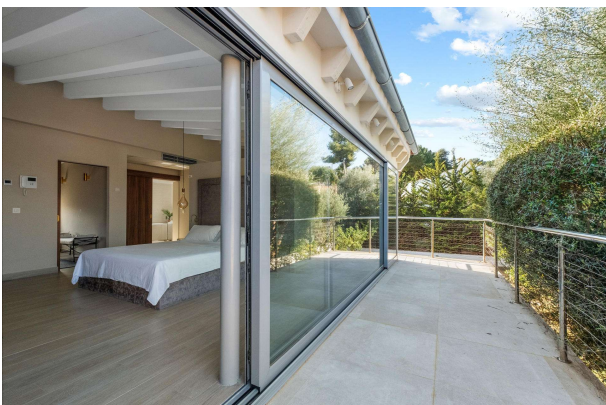
outdoor terraces, where you can enjoy Mallorca's sunny climate year-round.

The outdoor space is perfect for both relaxation and entertaining, with well-maintained gardens, a private swimming pool, and multiple lounging areas. The villa also benefits from a holiday license, making it an ideal investment for those seeking rental income during the high season.

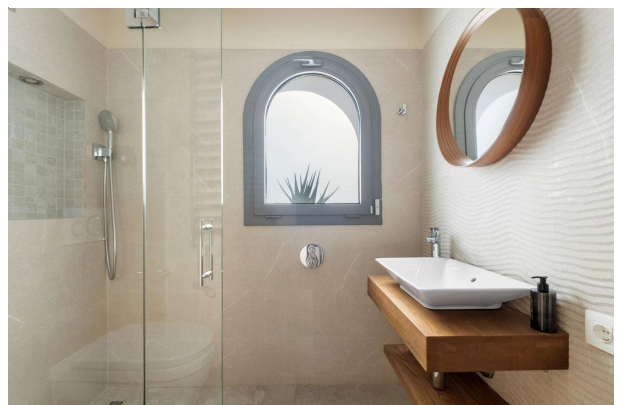
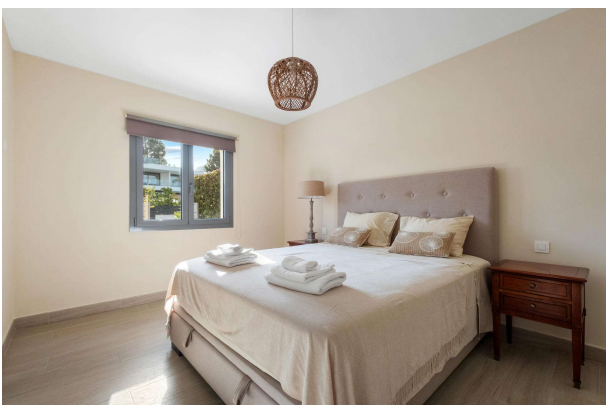
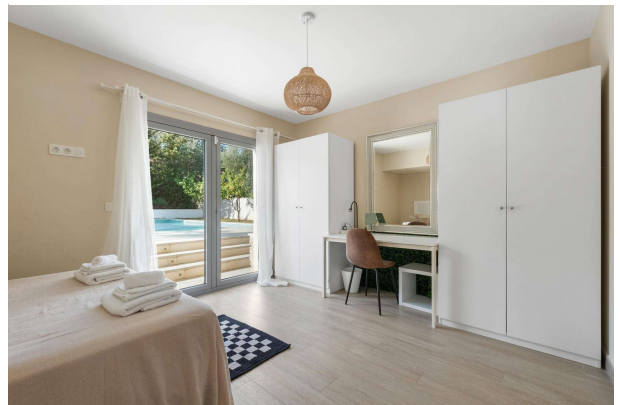
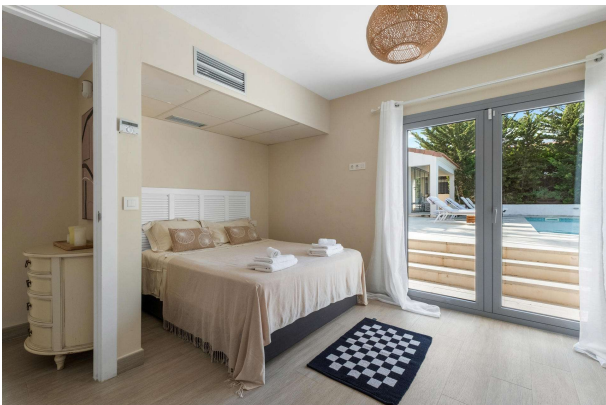
Located just minutes away from the beach, golf courses, and vibrant local amenities, this villa offers a prime location for those looking to enjoy the best of Santa Ponsa's lifestyle.

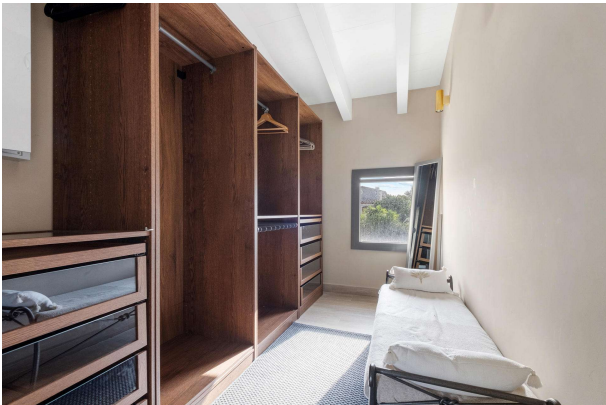
images

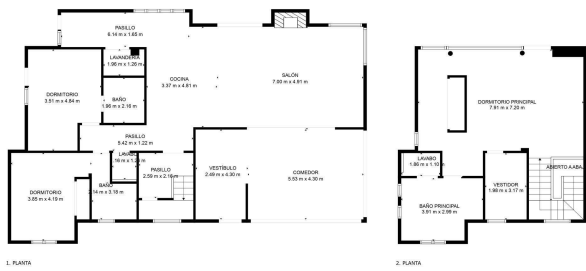




dscf1007







TOTAL: 224 m²
 1. PLANTA: 130 m²; 2. PLANTA: 68 m²
 ÁREAS EXCLUIDAS: CHIRENEA: 1 m²; ABIERTO A ABAJO: 2 m²

LOS PRECIOS SON CALCULADOS UTILIZANDO LA TÉCNICA DEL VALOR DE MERCADO. SE PUEDE APLICAR EL VALOR DE MERCADO PARA LOS DORMITORIOS.