



**KENSINGTON**<sup>®</sup>

Finest Properties International

## Mint villa from 2016 with pool in good residential area, Palma de Mallorca



## general:

---

<b>object number external:</b>	KPP07228	<b>as from:</b>	18.12.2024
<b>usage:</b>	habitation	<b>marketing method:</b>	purchase
<b>property:</b>	House	<b>construction year:</b>	2016
<b>place:</b>	07011 Palma de Mallorca	<b>available from:</b>	3 months
<b>living space:</b>	435,00 m <sup>2</sup>	<b>Floor space:</b>	485,00 m <sup>2</sup>
<b>Total size of site:</b>	521,00 m <sup>2</sup>	<b>Number of Rooms:</b>	8,0
<b>Number of bedrooms:</b>	7,0	<b>Number of bathrooms:</b>	4,0
<b>number of parking spaces:</b>	1,0	<b>Condition:</b>	as new

## prices:

---

**purchase price:** 1.984.000,00 €

## energy certificate:

---

<b>expiry date:</b>	2023-03-17	<b>age group:</b>	2008
<b>heating YOC:</b>	2016	<b>value class:</b>	A
<b>beaconing:</b>	electric, solar	<b>primary energy sources:</b>	SOLAR

## contact person:

---

<b>name:</b>	Kensington Palma	<b>street:</b>	
<b>place:</b>		<b>phone:</b>	+34 971674306
<b>fax number:</b>	0034971673040	<b>Email:</b>	palma@kensington-international.com

## Infrastructure:

---

## Description:

---

Mint villa with pool just below Son Vida, northwest of the centre of Palma de Mallorca. It is a quiet, convenient location: large supermarkets and two bus stops are a few steps away, and three golf courses and many international schools are close by.

This is a SPACIOUS, FAMILY-FRIENDLY HOUSE. It was BUILT IN 2016 and is in TOP CONDITION. Equipment and finishing are on a high level (e.g. energy class "A"). The social area (living/dining/kitchen + pool terrace) is spacious and elegant, the garden is easy to maintain. Several covered terraces measure 50m<sup>2</sup> in total, the POOL 7x3 m.

Layout of the house (approx. 435m<sup>2</sup> incl. souterrain): on the ground floor, living/dining area with open-plan kitchen, 1 bedroom, 1 bathroom; upstairs, 4 bedrooms (master with dressing room), 2 bathrooms (1 en suite); in the glazed souterrain, 2 bedrooms (or: office, gym, etc.), 1 bathroom, utility room, 2 storerooms, GARAGE for 1-2 cars.

Equipment: marble floors, marble bathrooms, ethanol fireplace, built-in wardrobes, showers & bathtub, double glazing, electric blinds, UNDERFLOOR HEATING, AC hot/cold, solar panels, water softener, alarm.

Please ask us for further information (we have floor plans) or to arrange a viewing. We will not assume any liability for the information provided. Kensington reference: KPP07228

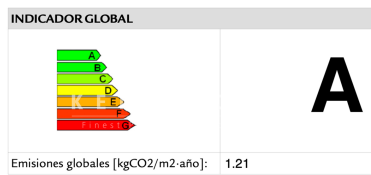
## images

---

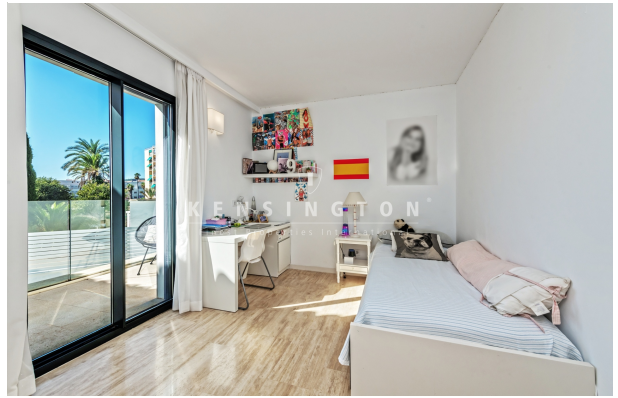




Energy Certification A









Souterrain

