



KENSINGTON®
Finest Properties International

Modernised townhouse in Pollensa for sale



general:

object number external:	KNP08311	as from:	20.07.2025
usage:	habitation	marketing method:	purchase
property:	House	construction year:	1980
place:	07460 Pollensa	living space:	75,00 m²
Floor space:	103,00 m²	Total size of site:	38,00 m²
Number of Rooms:	3,0	Number of bedrooms:	2,0
Number of bathrooms:	2,0	Condition:	modernized

prices:

purchase price:	348.000,00 €
-----------------	--------------

energy certificate:

value class:	E
--------------	---

contact person:

company:	KENSINGTON Pollensa	name:	KENSINGTON Pollensa
street:	Carrer de Philip Newman 17	place:	07460 Pollensa
www:	www.kensington-pollensa.com		

Infrastructure:

Description:

Unique opportunity in the historic center of Pollençà!

We present this charming, recently renovated townhouse located in one of the most iconic areas of the town. Featuring two bright bedrooms and a cosy terrace, it's the perfect place to enjoy the atmosphere and tranquillity that this wonderful location offers.

The property has been renovated, combining the traditional character of the area with the modern amenities you need.

On the ground floor, there is a space used as a dining room, a beautiful and bright kitchen, and a small guest toilet.

The first floor features a bedroom, a bathroom with a shower illuminated by a skylight, and a living room full of charming details.

On the top floor, there is a very spacious master bedroom with access to a cosy and characterful terrace, ideal for enjoying summer afternoons.

Don't miss out on the opportunity to live in the heart of Pollença, just a few steps away from its cobbled streets, restaurants, and boutiques.

Contact us for more information and to schedule a visit!

Location:

Discover the North of Mallorca: A Timeless Blend of Nature, Cuisine, and Luxury

The north of Mallorca is an exclusive haven for those who seek the perfect balance between natural beauty, cultural richness, and modern luxury. With the majestic Tramuntana Mountains, a UNESCO World Heritage site, providing a stunning backdrop, this region offers an unparalleled connection to nature and tranquilly.

One common thread among its residents and visitors alike is a deep love and respect for the surrounding environment. This commitment to preserving the beauty of the region is reflected in the thoughtful integration of homes and businesses into the landscape, ensuring that its charm remains intact for generations to come.

The north of Mallorca is lined with exceptional restaurants offering both authentic Mallorcan flavours and fine dining experiences that cater to every culinary taste. Whether you're enjoying a meal in a charming coastal town or a sophisticated eatery, the gastronomic scene is a true delight for food enthusiasts.

For those who love the water, the north of Mallorca offers an idyllic setting for boating. With its stunning coastline, hidden coves, and mysterious caves, the region provides the perfect backdrop for exploring the island by sea. Whether sailing through crystal-clear waters or discovering secluded natural spots, this coastal beauty is a boater's paradise.

Nature lovers will find endless opportunities to explore the land as well. The region is a gateway to some of Mallorca's most beautiful hiking trails, peaceful beaches, and untouched landscapes, inviting you to experience the island's natural splendour in all its forms.

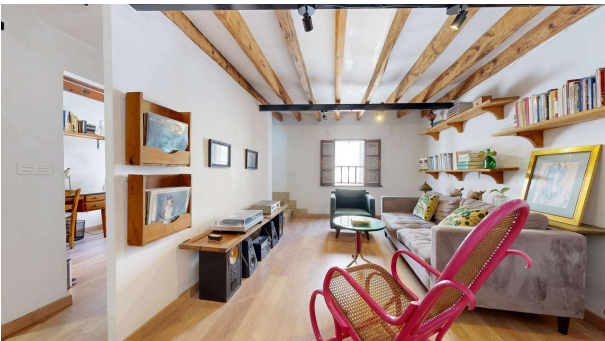
The real estate market in the north of Mallorca features an array of exquisite estates, luxury villas, and elegant fincas. These properties blend modern comforts with the island's traditional charm, providing the perfect retreat for those who seek tranquillity, privacy, and an unparalleled lifestyle.

Whether you are searching for a luxurious second home, a peaceful getaway, or a place to embrace a refined

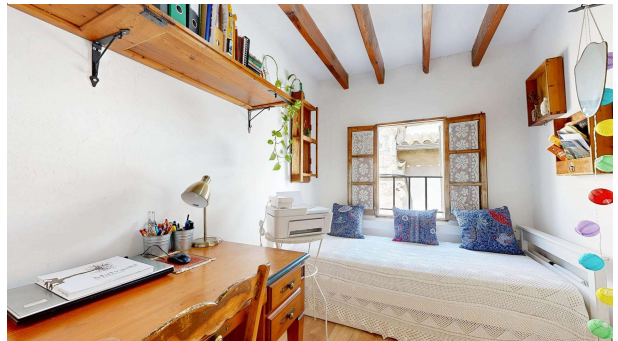
Mediterranean lifestyle, the north of Mallorca offers an extraordinary experience in one of the most enchanting parts of the world.

images

ca7a04cd-ddec-4c20-875f-7f60f4255327



3eff7f6f-2a50-4353-9166-758aef9d90f7



17133d72-475c-4c5d-ae89-6bced09813da



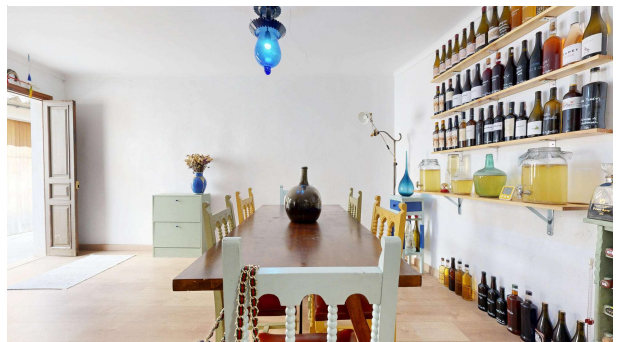
8848d6dd-436e-482b-8f2f-e5a82dba7c56



7bbdb661-d9ca-4305-93d4-6141d25622e1



be15ac50-84aa-4a26-9c7b-8c56b32ad814



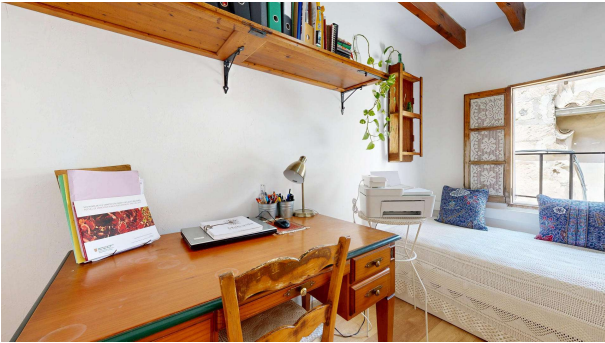
eddd223f-abe2-47f0-8999-16e3711b7f22



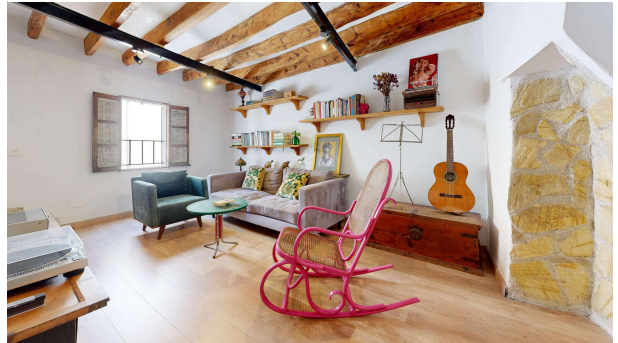
2dab8af2-bb91-43b0-8dd7-e0471c1b25e7



84c003ff-8eb2-4774-8622-65648c211e63



a0064b03-5921-4d33-be5c-e7a725409e16



4c792674-3f07-4002-89dc-48fec0caeb47



c9019cf8-308f-4d76-b3ce-655fbfab6082



0cc59d22-9578-4ba4-a28b-b39ee61dd6e1



fd2b562d-63cc-43ca-aedf-53bf9ddfe21f



b094d547-6369-49d7-a4ea-de67e53abbf8



3caa4fcf-cbed-4f9a-8e37-76cd5cac664c



a71a68de-11c7-4c74-b809-4a750e6be965



4706ab02-8bdd-4c89-94bd-927f531f4a07



6e893512-cb8f-4b5d-8666-4f1077f71f58



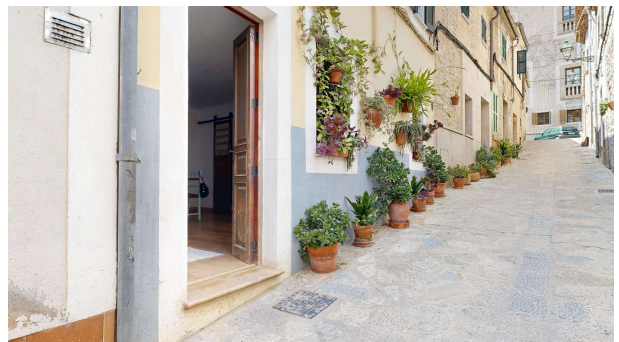
0635b095-8d5c-484c-a6c1-4b933fb53dba



cc4c7a5f-372b-4dfe-8c8c-f4aed39560f5



8dbd582a-6cec-466f-80c0-21bc2ef5410a



90e64b95-04a4-4667-a40c-7263f149d3c8



c12c7831-7c0e-4a92-800d-6c24e0fcbe5c



732cdb19-39ff-461e-9b8f-e1c74c7b8dba



58579baa-d09f-4fa1-9750-a1aa4fb63d82

