

New designer penthouses with terraces near Portixol, Palma de Mallorca



general:

object number external:	KPP04881	as from:	22.07.2025
usage:	habitation	marketing method:	purchase
property:	flat	construction year:	2021
place:	07007 Palma	living space:	274,00 m²
Floor space:	403,00 m²	Number of Rooms:	3,0
Number of bedrooms:	2,0	Number of bathrooms:	2,0
Condition:	first time use		

prices:

purchase price:	2.550.000,00 €
-----------------	----------------

energy certificate:

value class:	A
--------------	---

contact person:

company:	KENSINGTON Palma	name:	KENSINGTON Palma
street:	C/ Conquistador 8, bajo	place:	07001 Palma de Mallorca
www:	www.kensington-palma.com		

Infrastructure:

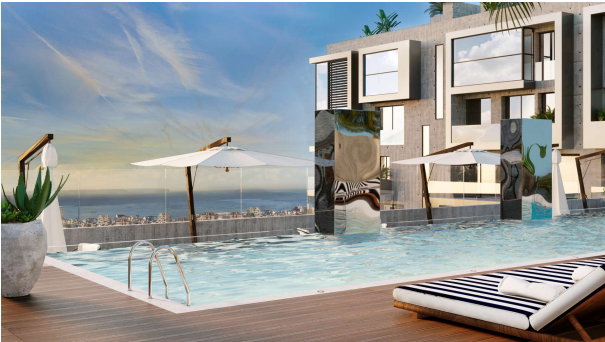
Description:

Location, design, quality – areas where this new high-end residential complex sets benchmarks in Palma de Mallorca. It is located in a new district just 800m from the sandy beach of Portixol, one of Palma's the most beautiful quarters. The old town is within walking distance. The complex is a true jewel designed by renowned architects, and it should become a new landmark of Palma. It offers generous glazing, lovely terraces, top qualities, cutting-edge building technology and sustainability. Available for residents: concierge (24/7), communal rooftop pool (10x6 m), pool sun deck, gym, sauna, cafeteria, underground car park, lifts, bicycle room, electric car charging stations.

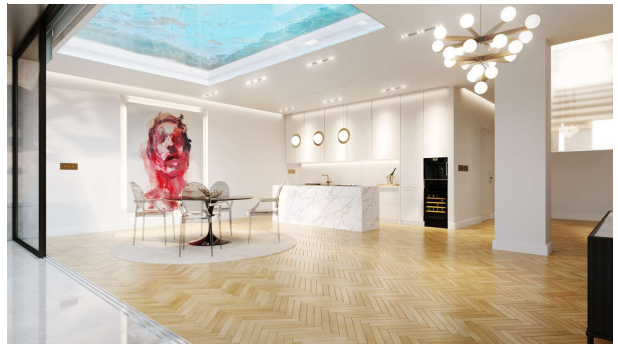
There are still 3 penthouses available: 1) 6E for 2.430.000€ (225m2 + 56m2 terraces), 2) 6L for 2.550.000€ (274m2 + 129m2 terraces), 3) 6H for 3.360.000€ (412m2 + 201m2 terraces). All have private rooftop terraces with a splash pool. Features: security door, fitted kitchen (Miele), built-in wardrobes, double glazing, electric shutters, underfloor heating, AC hot/cold, KNX house control, alarm, outdoor shower, storeroom. Please ask us for further information. We will not assume any liability for the information provided. Kensington reference: KPP04881

images

Communal pool



Penthouse design "Vanity"



Penthouse design "Raw"



Penthouse



Kitchen "Raw"





Overview Penthouses

5A	211m2 2 bedrooms	6F	232m2 1 bedroom
5B	230m2 2 bedrooms	6H	423m2 4 bedrooms
6C	232m2 3 bedrooms	6I	419m2 4 bedrooms
6D	233m2 3 bedrooms	6J	226m2 2 bedrooms
6E	233m2 3 bedrooms	6K	240m2 3 bedrooms



Entrance



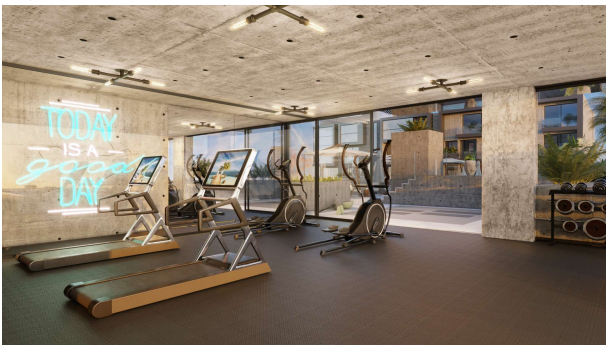
Communal cafeteria lounge



Communal roof lounge



Gym



Penthouse design "Raw"



Kitchen "Island"



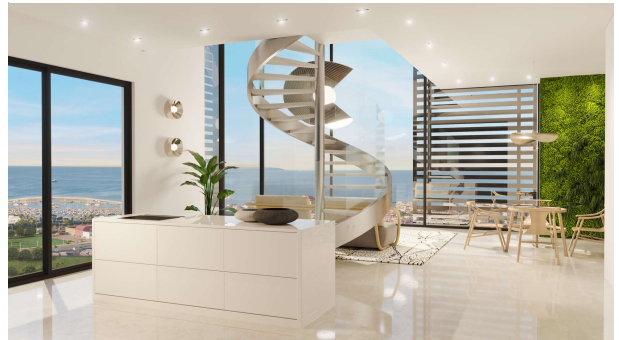
Kitchen "Vanity"



Bathroom design "Island"



Penthouse design "Island"



Penthouse design "Vanity"

