



KENSINGTON[®]
Finest Properties International

New villa with pool & panoramic terrace in Establiments, Palma de Mallorca



general:

object number external:	KPP07219	as from:	06.09.2024
usage:	habitation	marketing method:	purchase
property:	House	construction year:	2025
place:	07010 Establiments	available from:	July 2025
living space:	278,00 m ²	Floor space:	380,00 m ²
Total size of site:	536,00 m ²	Number of Rooms:	5,0
Number of bedrooms:	3,0	Number of bathrooms:	3,0
Number of sep. bathrooms:	1,0	number of parking spaces:	2,0
Condition:	as new		

prices:

purchase price: 3.450.000,00 €

energy certificate:

beaconing: air heat pump

contact person:

name:	Kensington Palma	street:	
place:		phone:	+34 971674306
fax number:	0034971673040	Email:	palma@kensington-international.com

Infrastructure:

Description:

This newly built villa with pool and panoramic terrace is under construction in Establiments, Palma de Mallorca. It has a quiet location with south orientation. There is a bus stop nearby with direct connection to the city centre. The centre of Palma is 8 km away.

The experienced developer is renowned for avant-garde design and top qualities. The house has large windows, and a glazed atrium brings additional light into the interior. In front of the living room there is a sunny garden (approx. 290m²) with a generous pool (10x3 m). The highlight is the huge terrace (102m²) above the living area with unobstructable panoramic views.

Layout of the villa (approx. 278m² incl. garage): on the ground floor, entrance area, living/dining area with open kitchen, TV room, guest toilet, master bedroom with dressing room and bathroom en suite, utility room, garage for 2 cars; on the upper floor, 2 twin bedrooms, 2 bathrooms.

Equipment: fitted kitchen (appliances: Neff, Bora), exposed beams, natural stone & oak wood floors, ethanol fireplace, built-in wardrobes, sun protection double glazing, underfloor heating, AC hot/cold, heat pump, water softener, alarm, sat. TV, summer kitchen, BBQ, outdoor shower, garden irrigation system, landscaped garden.

Please ask us for further information or to arrange a viewing. We will not assume any liability for the information provided. Kensington reference: KPP07219

Location:

Establiments is a picturesque and charming village located on the outskirts of Palma de Mallorca. This idyllic spot offers the perfect combination of rural tranquillity and urban proximity. Just a 10-minute drive separates Establiments from the vibrant capital of Palma, making it particularly attractive for those who want to enjoy the best of both worlds.

The village is known for its traditional Mallorcan houses, many with lovingly restored facades and charming courtyards. The streets of Establiments are lined with ancient olive trees and flowering gardens, creating an atmosphere of peace and relaxation.

The surroundings of Establiments are characterized by a gentle hilly landscape that invites you to go for walks and hikes. Numerous hiking trails lead through the picturesque landscape and offer breathtaking views of the Tramuntana mountains, a UNESCO World Heritage Site.

In Establiments itself, you will find a good selection of local amenities. Small stores, traditional restaurants and cafés offer everything you need for your daily needs and contribute to the authentic village life. For larger purchases and a more varied gastronomic offering, Palma de Mallorca offers numerous options.

The proximity to Palma de Mallorca also allows easy access to the best international schools, renowned health centers and first-class leisure facilities, including the island's beautiful beaches and exclusive golf courses.

Establiments is ideal for families looking for a quiet and safe living environment without giving up the amenities and cultural offer of the big city. It is also a preferred location for those seeking tranquillity and nature lovers who appreciate the beauty and charm of Mallorcan country life.

In short, Establiments offers a unique quality of life in one of the most sought-after regions of Mallorca and is a place where you can find the best of everything - nature, tranquillity and urban proximity.

images

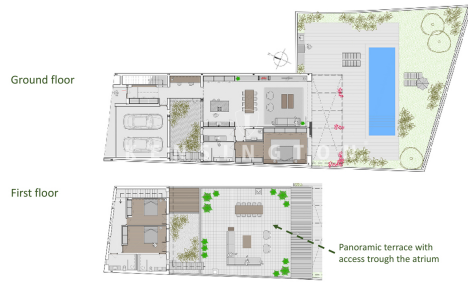


South façade





Floor plans



Rooftop terrace



Rooftop terrace



Rooftop terrace



South façade

