



**KENSINGTON**<sup>®</sup>  
Finest Properties International

# Spacious newly built penthouse near Portixol beach, Palma de Mallorca



## general:

---

<b>object number external:</b>	KPP07005	<b>as from:</b>	09.12.2024
<b>usage:</b>	habitation	<b>marketing method:</b>	purchase
<b>property:</b>	flat	<b>construction year:</b>	2026
<b>place:</b>	07007 Palma de Mallorca	<b>available from:</b>	2026-03-01
<b>available from:</b>	Early 2026 (estimate)	<b>living space:</b>	206,00 m <sup>2</sup>
<b>Floor space:</b>	303,00 m <sup>2</sup>	<b>floor:</b>	3
<b>Number of Rooms:</b>	5,0	<b>Number of bedrooms:</b>	1,0
<b>Number of bathrooms:</b>	3,0	<b>Number of sep. bathrooms:</b>	1,0
<b>number of parking spaces:</b>	1,0	<b>Condition:</b>	first time use

## prices:

---

**purchase price:** 3.200.000,00 €

## energy certificate:

---

**beaconing:** solar

## contact person:

---

<b>company:</b>	Bima Holding 2023 S.L.	<b>name:</b>	
<b>street:</b>	Calle Conquistador N° 8 bajo	<b>place:</b>	07001 Palma de Mallorca
<b>phone:</b>	0034971674306	<b>fax number:</b>	0034971673040
<b>Email:</b>	palma@kensington-international.com	<b>www:</b>	www.kensington-mallorca.com

## Infrastructure:

---

## Description:

---

Location, design, quality – areas in which this new high-end residential complex occupies top positions in Palma de Mallorca. It is located in an upscale newly-built district. The beautiful sandy beach of Portixol and the old town are within easy walking distance.

The complex is a true jewel designed by renowned architects. It offers generous glazing, lovely terraces, excellent finishing, cutting-edge building technology, and sustainability (energy class A+). Residents have at their disposal: concierge 24/7, large glass bottom communal pool, pool sun deck, lounge, cinema, golf simulator, gym, sauna, lifts, underground parking, bike room, electric car charging stations.

Layout of this duplex penthouse (approx. 206m<sup>2</sup> + terraces): on the lower level, living/dining area with open kitchen, 2 twin bedrooms, 1 bathroom, guest toilet, laundry; upstairs, 2 twin bedrooms (master with 9m<sup>2</sup> of terrace), 2 bathrooms en suite; on the rooftop, the main terrace (87m<sup>2</sup>).

Features: security door, kitchen w/ Miele appliances, built-in wardrobes, bathtub & showers, motorised windows w/ sun protection double glazing, electric shutters, underfloor heating, AC hot/cold, smart home control, storeroom. You can have this unit customized in many different ways.

Please ask us for further information. We will not assume any liability for the information provided. Kensington reference: KPP07003

## images

---



Pool deck



Pool deck



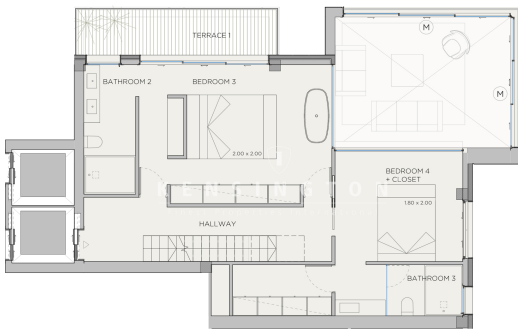




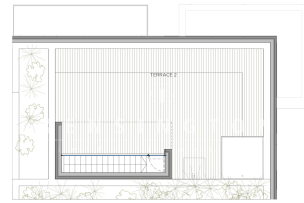
Lower level



Upper level



Rooftop terrace



Pool deck



Pool deck



South fasade



Foto\_825629



Gym



Patio



Building entrance



Building entrance

