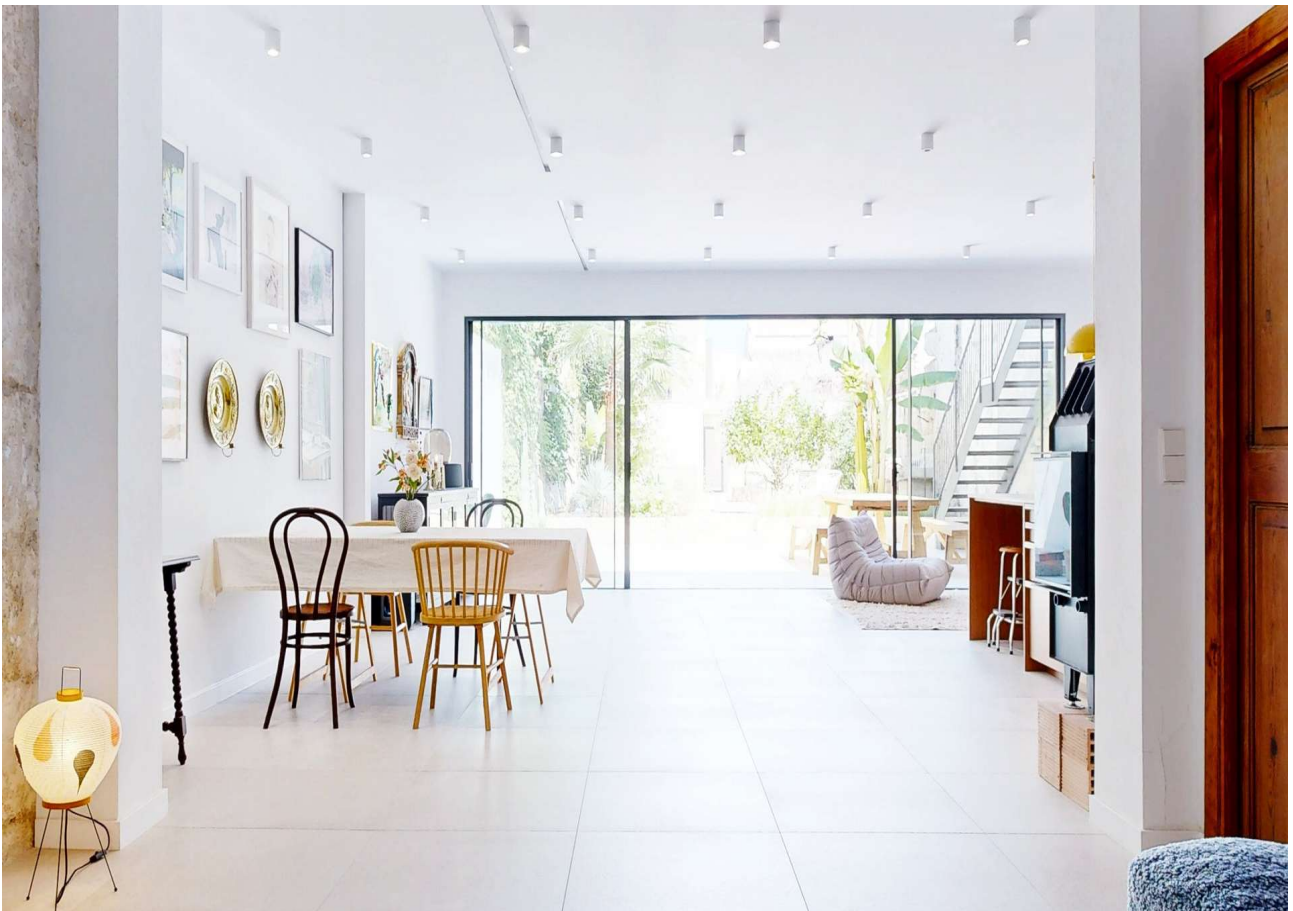


Stunning townhouse in Sa Pobla with large garden, pool and guest house



general:

object number external:	KNP08367	as from:	15.08.2025
usage:	habitation	marketing method:	purchase
property:	House	construction year:	1890
place:	07420 Sa Pobla	living space:	400,00 m²
Floor space:	450,00 m²	Total size of site:	437,00 m²
Number of Rooms:	9,0	Number of bedrooms:	7,0
Number of bathrooms:	5,0	Condition:	fully renovated
Interior cat.:	upmarket		

prices:

purchase price:	1.350.000,00 €
-----------------	----------------

energy certificate:

age group:	2014	value class:	A
beaconing:	electric	primary energy sources:	Strom

contact person:

company:	KENSINGTON Pollensa	name:	KENSINGTON Pollensa
street:	Carrer de Philip Newman 17	place:	07460 Pollensa
www:	www.kensington-pollensa.com		

Infrastructure:

Description:

Beautiful Townhouse with Large Garden, Pool, and Guest House in Sa Pobla

Nestled in the charming town of Sa Pobla, this stunning townhouse offers a perfect blend of spacious living, modern design, and excellent feng shui. With high ceilings throughout, the home ensures great energy flow, fostering creativity and positive vibes.

The entrance opens to a welcoming hall, with a versatile room on the right that currently serves as a space for bicycles, it could be an additional bedroom and a laundry room. For those wishing for a traditional garage with street access, a building permit would be granted to accommodate such a change.

The open-plan living area invites you in through beautiful arches, leading to a modern kitchen with an island and seating. The kitchen seamlessly integrates with the living and dining spaces, creating a perfect environment for socializing. Glass sliding doors open onto a large patio-style dining area and garden, ideal for outdoor meals and relaxation. A BBQ area and garden path guide you to the pool area, complete with a guest house. The guest house is equipped with a first-floor bedroom, a bathroom, and storage or living space on the ground floor, along with an outdoor shower for added convenience.

On the first floor of the main house, you'll find two bedrooms, including the luxurious master suite with a walk-in wardrobe, en-suite bathroom, and a cozy living area. This floor also features a spacious covered terrace, perfect for enjoying the outdoors. The staircase from the terrace leads down to the garden or up to the top floor.

The top floor offers four more bedrooms, a bathroom, and a large terrace with breathtaking views of the surrounding area, providing ample space for family or guests.

The property is equipped with solar panels, floor heating and airconditioning in every room.

Located just steps away from the main square, this property enjoys the best of both worlds: a peaceful, spacious retreat with easy access to all the amenities and charm of Sa Pobla.

Location:

Discover Sa Pobla – The Heart of Northern Mallorca

Sa Pobla is a charming and authentic Mallorcan town that offers a lively atmosphere throughout the year. The town boasts a wonderful selection of restaurants and cafés that remain open even during the winter months, perfect for enjoying local cuisine in a cozy setting. You'll find well-known supermarkets such as Mercadona, Eroski, and Lidl, alongside Son March, a delightful spot for purchasing organic, locally sourced meat, vegetables, and fruit. Additionally, there are hardware stores, yoga and Pilates studios, and a sports center with swimming pools.

On Sundays, the town square comes alive with the bustling market, where fresh produce and a warm, welcoming ambiance await.

From Sa Pobla, you can reach both the sea and the mountains in just 10–15 minutes. The stunning beaches of Alcúdia and Playa de Muro are ideal for relaxing, while the majestic Tramuntana mountains offer excellent opportunities for hiking and cycling. In just 5–10 minutes, you'll also find neighboring villages like Pollença, Campanet, Búger, and Muro, all offering their unique charm and attractions.

The town is lively year-round, with parades, sporting events, local fiestas, a jazz festival, and many other celebrations. Sa Pobla is well-connected, with bus and train services to Palma, plus a direct bus to the airport in around 35 minutes. Families will also appreciate the nearby international school located in Crestax.

Here, you'll experience the best of both worlds: a vibrant, close-knit community with easy access to nature and city life.

Equipment description:

- ? Built in AC in all rooms
- ? Solar panels
- ? Floor heating in all rooms
- ? BBQ with outdoor kitchen
- ? Pool
- ? Fireplace
- ? Wonderful garden with lemons, banana, passion fruit, figs, olive tree and subbed shaded by bamboos
- ? Fans and towels driers all bathrooms
- ? WiFi antennas all floors and garden/pool area.
- ? Design kitchen: The kitchen is hand bout by the local carpenter
- ? Mountain view from terrassen
- ? Renovated with keeping the Mallorca feeling mix with modern style

Other information:

Please understand that all information provided here is based on details supplied to us by third parties. Therefore, we cannot guarantee the accuracy, completeness, or timeliness of the information. The property remains subject to prior sale, price changes, and possible errors. All surface areas and equipment details mentioned in this exposé are for

general orientation purposes only and are non-binding.

Feel free to contact us at any time for further information or to arrange a viewing – we look forward to assisting you in your property search and advising you on buying or selling.

You can find this and other attractive properties on our website: <https://www.kensington-pollensa.com>

images

Townhouse Sa Pobla Mallorca



Townhouse Sa Pobla Mallorca



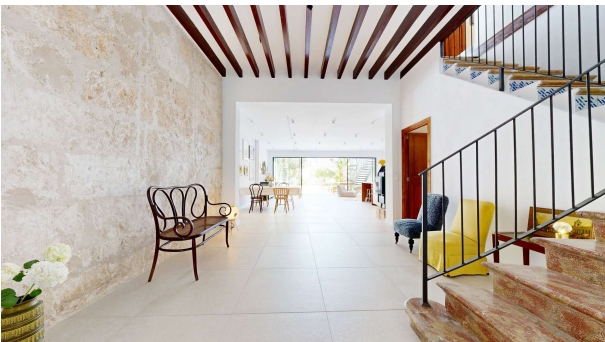
Townhouse Sa Pobla Mallorca



Townhouse Sa Pobla Mallorca



Townhouse Sa Pobla Mallorca



Townhouse Sa Pobla Mallorca



Townhouse Sa Pobla Mallorca



Townhouse Sa Pobla Mallorca



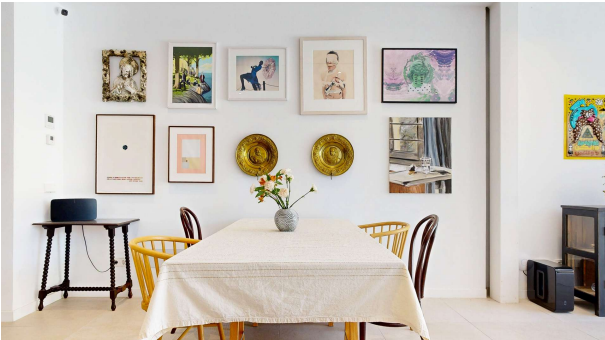
Townhouse Sa Pobla Mallorca



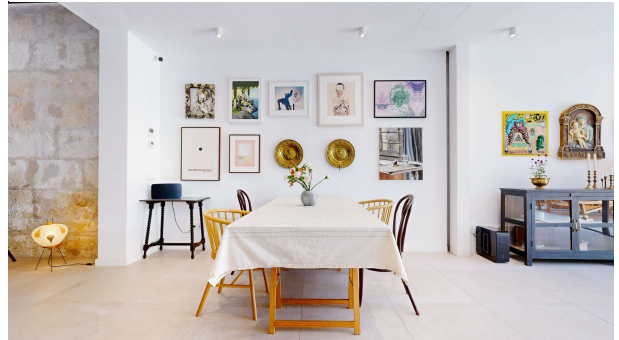
Townhouse Sa Pobla Mallorca



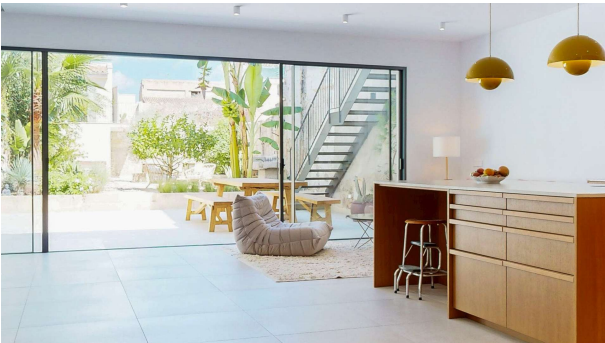
Townhouse Sa Pobla Mallorca



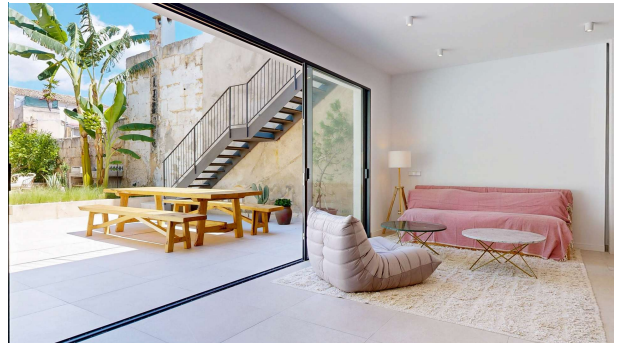
Townhouse Sa Pobla Mallorca



Townhouse Sa Pobla Mallorca



Townhouse Sa Pobla Mallorca



Townhouse Sa Pobla Mallorca



Townhouse Sa Pobla Mallorca



Townhouse Sa Pobla Mallorca



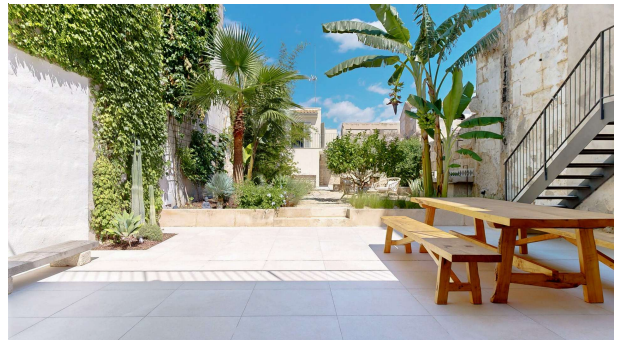
Townhouse Sa Pobla Mallorca



Townhouse Sa Pobla Mallorca



Townhouse Sa Pobla Mallorca



Townhouse Sa Pobla Mallorca



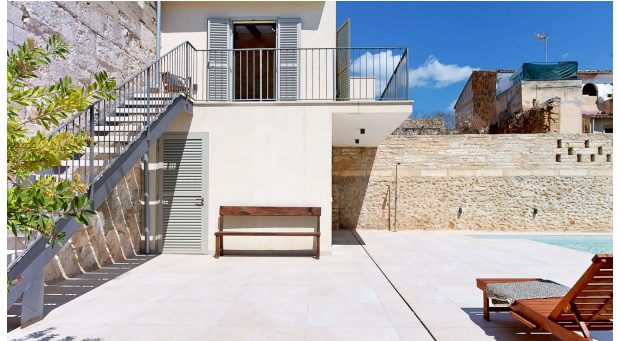
Townhouse Sa Pobla Mallorca



Townhouse Sa Pobla Mallorca



Townhouse Sa Pobla Mallorca



Townhouse Sa Pobla Mallorca



Townhouse Sa Pobla MallorcaTownhouse Sa Pobla Mallorca



Townhouse Sa Pobla Mallorca



Townhouse Sa Pobla Mallorca



Townhouse Sa Pobla MallorcaTownhouse Sa Pobla Mallorca



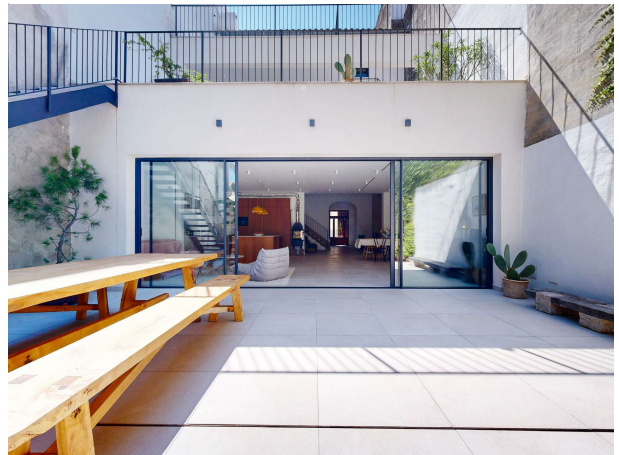
Townhouse Sa Pobla Mallorca



Townhouse Sa Pobla Mallorca



Townhouse Sa Pobla Mallorca



Townhouse Sa Pobla Mallorca



Townhouse Sa Pobla Mallorca



Townhouse Sa Pobla Mallorca



Townhouse Sa Pobla Mallorca



Townhouse Sa Pobla Mallorca



Townhouse Sa Pobla Mallorca



Townhouse Sa Pobla Mallorca



Townhouse Sa Pobla Mallorca



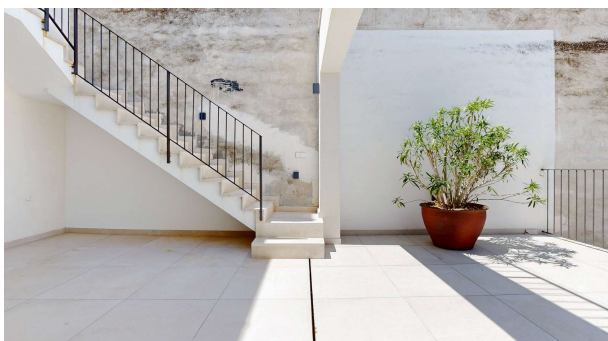
Townhouse Sa Pobla Mallorca



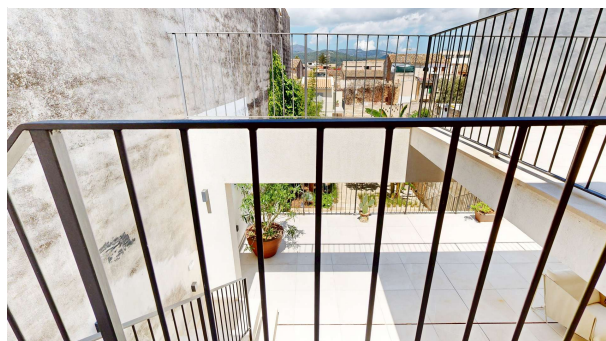
Townhouse Sa Pobla Mallorca



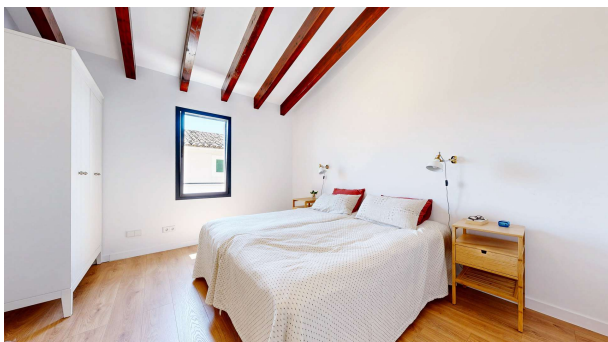
Townhouse Sa Pobla Mallorca



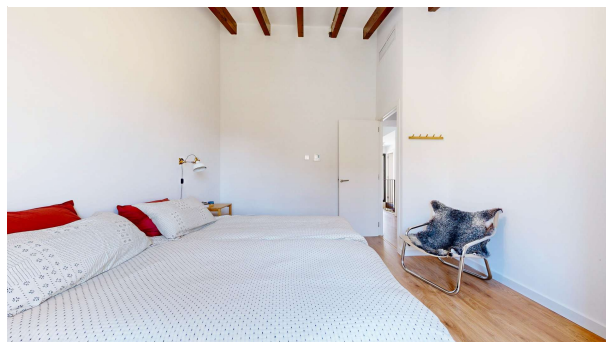
Townhouse Sa Pobla Mallorca



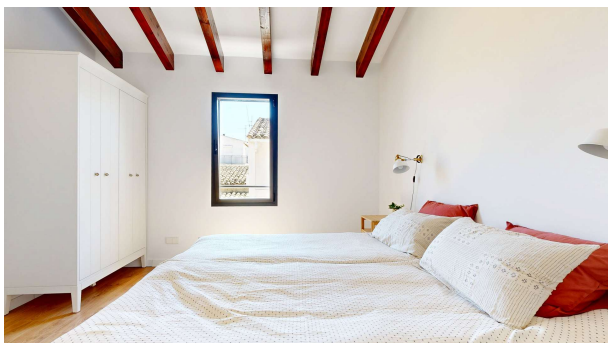
Townhouse Sa Pobla Mallorca



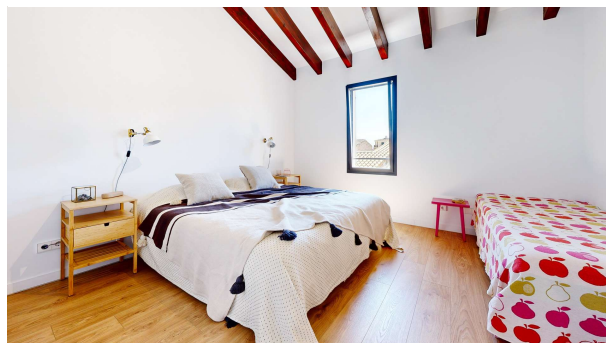
Townhouse Sa Pobla Mallorca



Townhouse Sa Pobla Mallorca



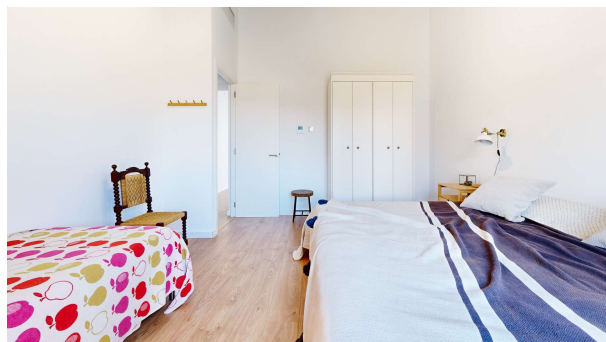
Townhouse Sa Pobla Mallorca



Townhouse Sa Pobla Mallorca



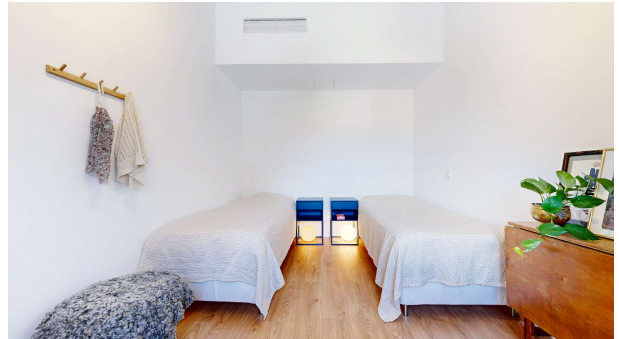
Townhouse Sa Pobla Mallorca



Townhouse Sa Pobla Mallorca



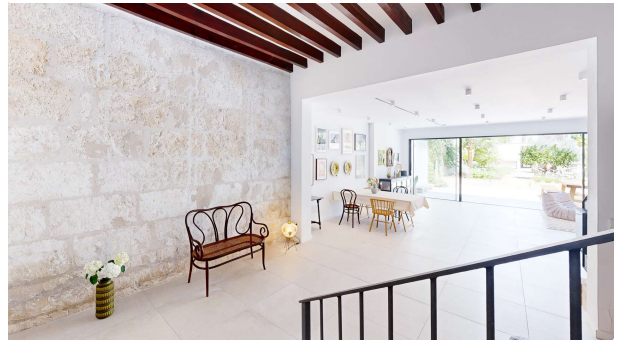
Townhouse Sa Pobla Mallorca



Townhouse Sa Pobla Mallorca



Townhouse Sa Pobla Mallorca



Townhouse Sa Pobla Mallorca



Townhouse Sa Pobla Mallorca



Townhouse Sa Pobla Mallorca



Townhouse Sa Pobla Mallorca

