

Villa with amazing views in Galilea, Mallorca



general:

object number external:	KPP05844	as from:	22.07.2025
usage:	habitation	marketing method:	purchase
property:	House	construction year:	1975
place:	07195 Puigpunyent	living space:	264,00 m ²
Floor space:	453,00 m ²	Total size of site:	3.615,00 m ²
Number of Rooms:	8,0	Number of bedrooms:	5,0
Number of bathrooms:	4,0	Condition:	groomed

prices:

purchase price:	2.295.000,00 €
-----------------	----------------

energy certificate:

contact person:

company:	KENSINGTON Palma	name:	KENSINGTON Palma
street:	C/ Conquistador 8, bajo	place:	07001 Palma de Mallorca
www:	www.kensington-palma.com		

Infrastructure:

Description:

"Location, location, location" is the hallmark of a top property, which in this case means "views, views, views". IT IS DIFFICULT TO FIND BETTER VIEWS IN MALLORCA. The villa is located in GALILEA, Mallorca. The views go to the coast around Santa Ponça, the SEA, the mountains, the village and the church. All this in combination with SOUTHWEST ORIENTATION, total PRIVACY and TRANQUILITY. Galilea is 20km from Palma and 20km from the beaches around Santa Ponça (winding roads). Important personalities used to live in the village. For example, Galilea's reliable supply of liqueurs and spirits goes back to Paul Newman and Tony Curtis. The house dates from 1975, was completely refurbished in 1994, and again REFURBISHED IN 2018. It has large terraces (150m²) and a

GUESTHOUSE. The panoramic pool measures 9x3m. It has a HOLIDAY RENTAL LICENSE. The adjoining plot is included in the price. Distribution of the main house (approx. 184m²+ 39m² garage/storeroom in the basement): on the ground floor living room, dining room, kitchen+pantry, 3 bedrooms, 2 bathrooms; on the upper floor 1½ bedrooms, 1 bathroom. Guesthouse (approx. 80m²): living/dining/kitchen, 1½ bedrooms, 1 bathroom. Features I.A.: part of the furniture, double glazing, fireplace, CENTRAL HEATING, alarm.

Please ask us for further information or to arrange a viewing. We will not assume any liability for the information provided in this description.

Location:

Galilea, a mountain village in the west of the island of Mallorca, is idyllically nestled in the foothills of the Tramuntana mountains. This quiet and charming community belongs to the municipality of Puigpunyent and is located at around 460 meters above sea level. Galilea offers breathtaking views of the surrounding mountains and the deep blue Mediterranean Sea in the distance.

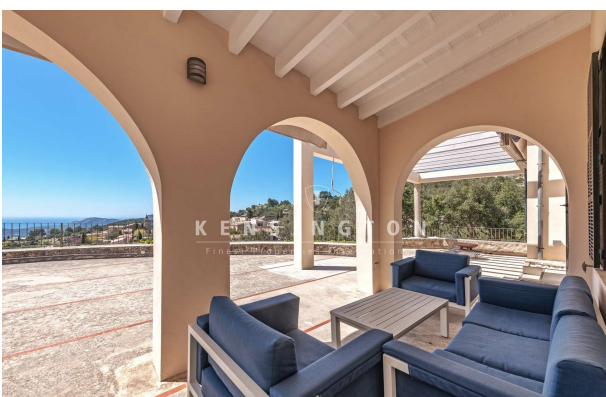
The village impresses with its traditional Mallorcan architecture with old stone houses, narrow streets and a charming little church, the "Església de Galilea". Here you can still feel the authentic flair of the island and enjoy the peace and seclusion far away from mass tourism.

Galilea is an ideal retreat for nature lovers and hiking enthusiasts. Numerous hiking trails start right on the doorstep and lead through the unspoiled landscape of the Tramuntana mountains. The surrounding area also offers excellent conditions for cycling and other outdoor activities.

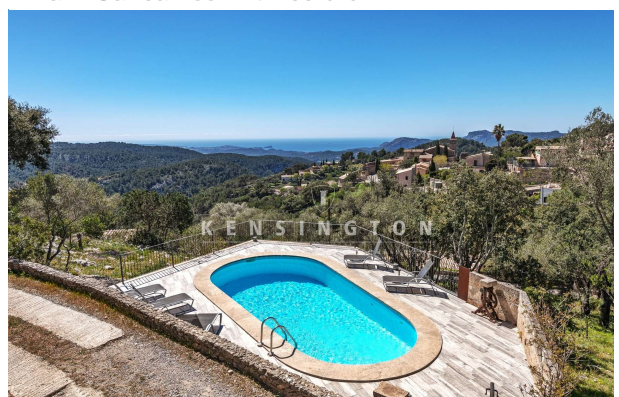
Despite its idyllic seclusion, Galilea is easily accessible. The journey time to the island's capital Palma is only around 30 minutes. Here you will find a wide range of shopping facilities, cultural attractions and restaurants. The beaches of the southwest coast can also be reached in less than an hour.

In Galilea you will experience the original Mallorca in its purest form. A place that combines tranquillity, nature and traditional charm with proximity to the amenities of the city. Ideal for anyone looking for an idyllic place to live that offers both a retreat and good connections.

images



Villa in Galilea Pool mit Meerblick



Villa in Galilea Esszimmer



Villa in Galilea Esszimmer



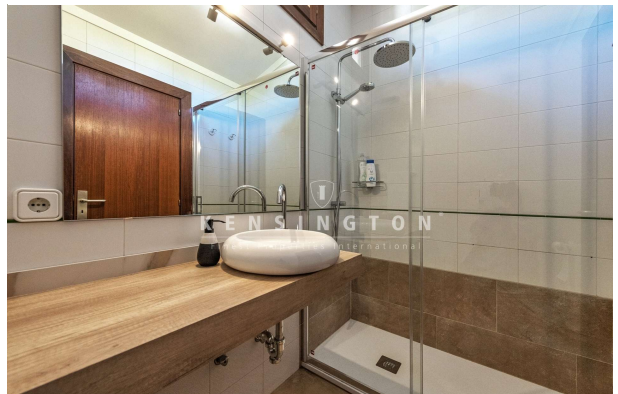
Villa in Galilea Wohnzimmer



Villa in Galilea Küche



Villa in Galilea Schlafzimmer



Villa in Galilea Pool





