

Villa with pool, sauna and gym for long term rental in Crestatx, close to Sa Pobla



general:

object number external:	KNP08360R	as from:	31.07.2025
usage:	habitation	marketing method:	rent/lease
property:	House	construction year:	2019
place:	07420 Sa Pobla	living space:	320,00 m ²
Floor space:	591,00 m ²	Total size of site:	1.050,00 m ²
Number of Rooms:	5,0	Number of bedrooms:	4,0
Number of bathrooms:	4,0	Condition:	as new

prices:

energy certificate:

contact person:

company:	KENSINGTON Pollensa	name:	KENSINGTON Pollensa
street:	Carrer de Philip Newman 17	place:	07460 Pollensa
www:	www.kensington-pollensa.com		

Infrastructure:

Description:

Contemporary Villa with Pool, Sauna & Gym in the Sought-After Crestatx Area near Sa Pobla

Located in the desirable residential area of Crestatx, just a short drive from Pollensa and close to the renowned international school, this modern villa built in 2019 offers elegant design, comfort, and functionality tailored for year-round living.

The property boasts a striking entrance with double-height ceilings and an open-plan layout that flows seamlessly between the living, dining, and kitchen areas. Large sliding doors open onto the terrace and garden, creating a perfect

connection to the outdoor space, pool, and chill-out area. A cosy fireplace adds charm to the bright living room, while the sleek kitchen is fully equipped and ideal for entertaining.

The ground floor includes a guest bedroom with en suite bathroom and a separate guest WC for added convenience.

Upstairs, the villa features three further double bedrooms, all with en suite bathrooms. The master suite stands out with its private terrace offering open views – a perfect retreat.

On the lower level, a spacious 110 m² garage is complemented by a wellness and fitness area including a gym, sauna, jacuzzi, and a laundry room – making this a truly complete home.

Additional features:

Underfloor heating throughout

Integrated air conditioning

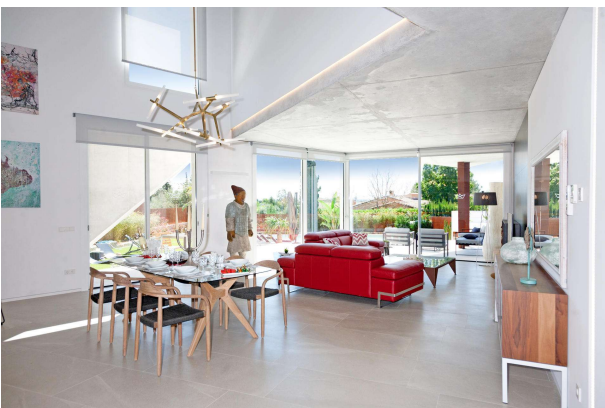
Double glazing

Quiet, family-friendly area with international neighbours

This property is ideal for those seeking a stylish, fully equipped home with premium amenities in a peaceful setting, yet close to schools, services, and connections to Palma and the airport.

images

_1613169



_1613173



_1613171



_1613175



_1613177



_1613181



_1613179



_1613185



_1613183



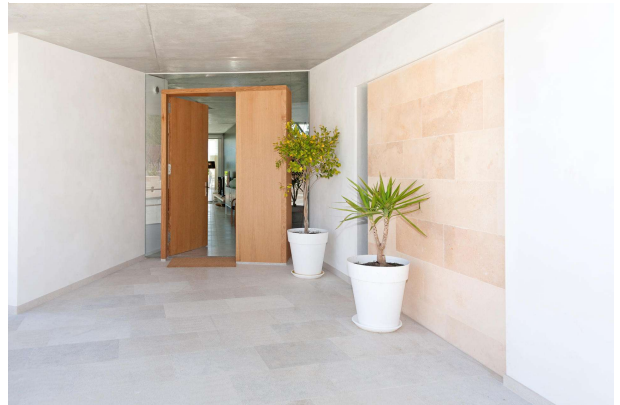
_1613189



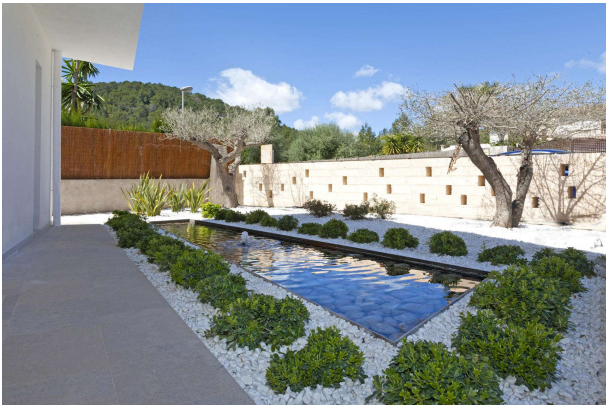
_1613187



_1613191



_1613193



_1613195



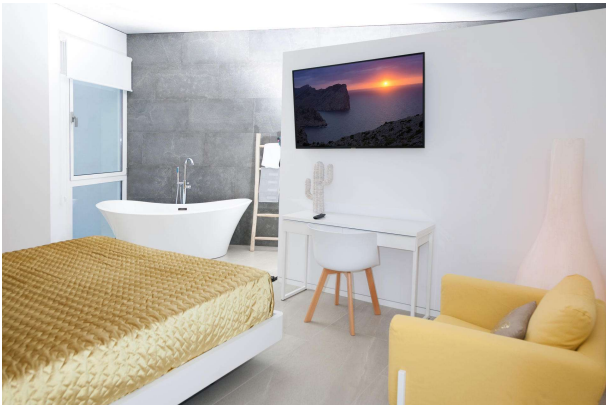
_1613197



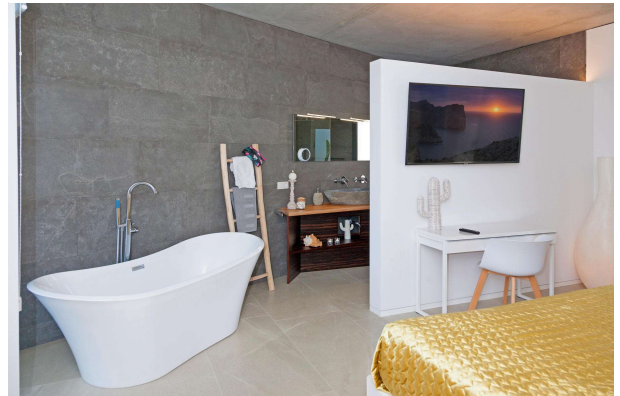
_1613199



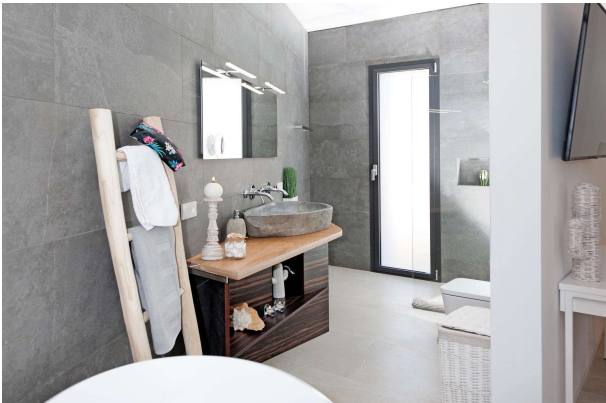
_1613201



_1613203



_1613205



_1613207



_1613211



_1613209



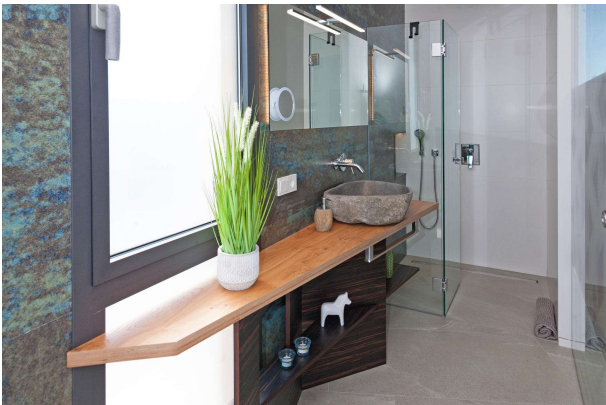
_1613213



_1613215



_1613219



_1613217



_1613223



_1613221



_1613227



_1613225



_1613231



_1613229



_1613233



_1613235



_1613237



_1613239



_1613241



_1613243



_1613245



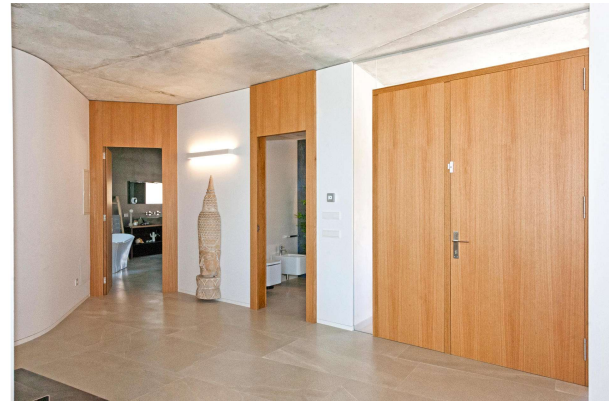
_1613247



_1613249



_1613251



_1613253



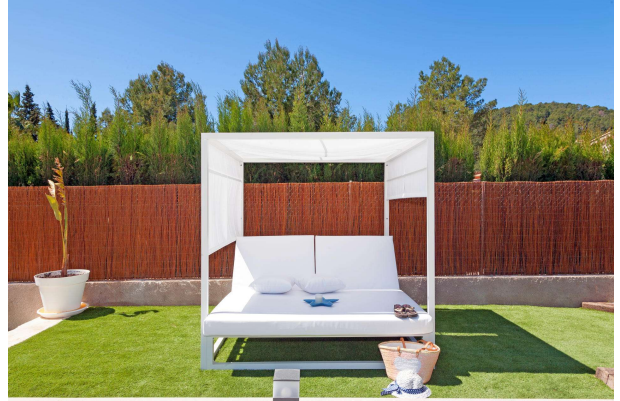
_1613255



_1613257



_1613259



_1613261



_1613263



_1613267



_1613265



_1613271



_1613269



_1613273



_1613275



_1613279



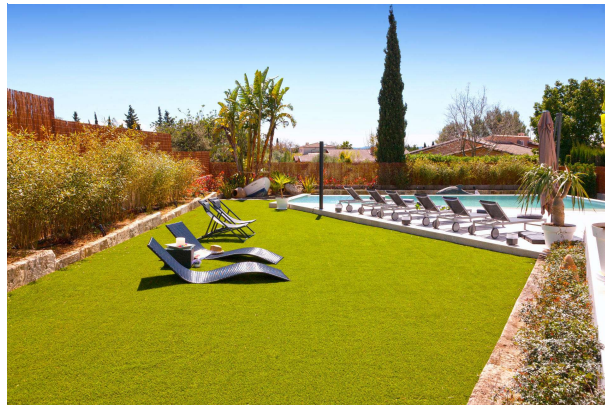
_1613277



_1613281



_1613283



_1613287



_1613285



_1613289



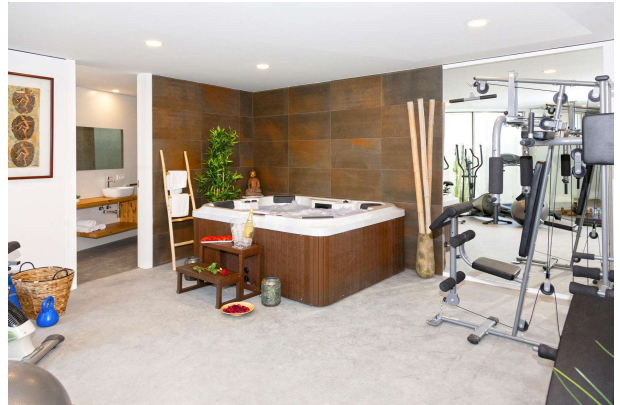
_1613291



_1613295



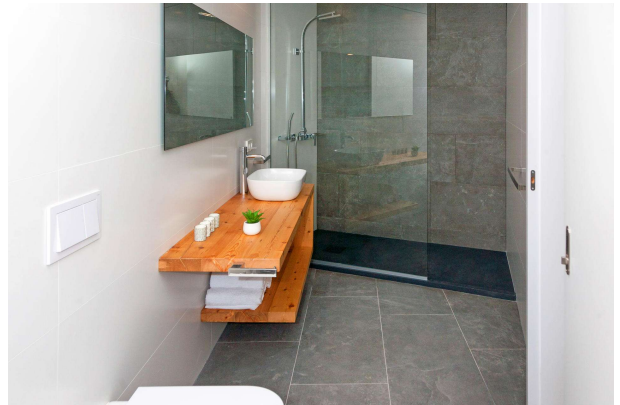
_1613293



_1613299



_1613297



_1613303



_1613301



_1613305



_1613307



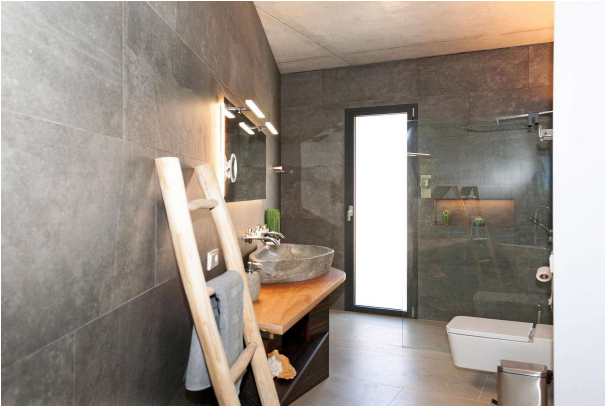
_1613311



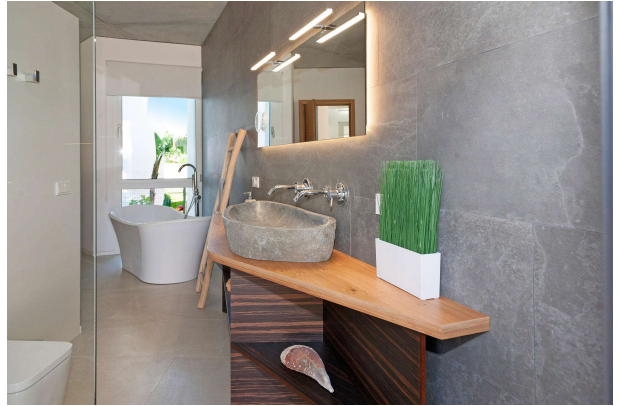
_1613309



_1613315



_1613313



_1613319



_1613317



_1613323



_1613321



_1613325



_1613327



_1613331



_1613329



_1613335



_1613333

