



K E N S I N G T O N®
Finest Properties International

Where Time Rests



general:

object number external:	KAO00516	as from:	02.08.2025
usage:	habitation	marketing method:	purchase
property:	House	construction year:	1900
place:	07150 Andratx	living space:	303,00 m²
Total size of site:	444,00 m²	Number of Rooms:	9,0
Number of bedrooms:	6,0	Number of bathrooms:	2,0
number of parking spaces:	1,0	Condition:	part / full renovation required

prices:

purchase price:	900.000,00 €
-----------------	--------------

energy certificate:

contact person:

company:	Port Andratx Finest Properties S.L.U.	name:	KENSINGTON Santa Ponsa & Andratx
street:	Carrer d'Antoni Calafat Toni Pino 7	place:	07157 Port Andratx
www:	www.kensington-andratx.com		

Infrastructure:

Description:

Imagine a place where time slows down, where the scent of fruit trees in the air and the only sound is laughter shared between friends and family. Just a few minutes from the heart of Andratx and its beloved local market, this authentic Mallorquin home invites you to reconnect—with nature, with loved ones, with yourself.

Steeped in history, the house has been lovingly preserved, its thick stone walls and wooden beams telling stories of generations past. Now, it opens its doors to new memories—lazy summer lunches and quiet mornings watching the sun rise over the hills.

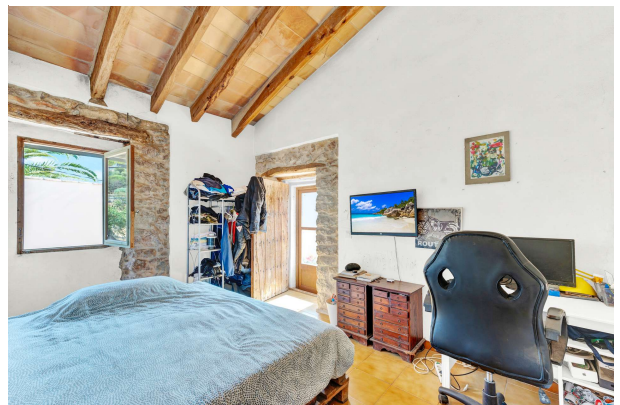
With 6 spacious bedrooms, this is a home made for gathering. Whether it's long weekends with friends or slow holidays with family, there is room for everyone to feel at home. The warm, rustic kitchen becomes the heart of the house, while the shaded terraces and peaceful outdoor spaces invite lingering conversations and siestas in the breeze.

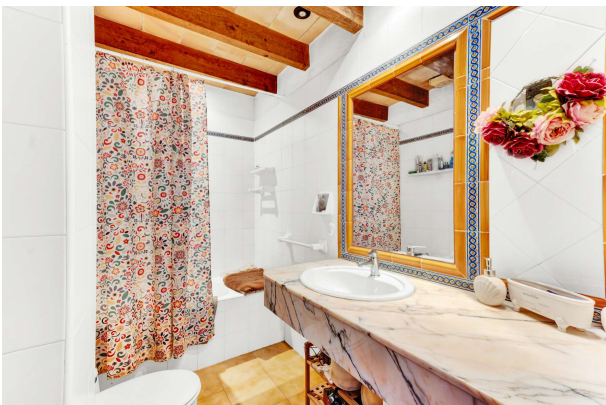
This is more than a property. It's a way of life—rooted in tradition, open to the future, and deeply connected to the land and its rhythm. A rare opportunity to live Mallorca as it was meant to be lived: simply, beautifully, together.

images

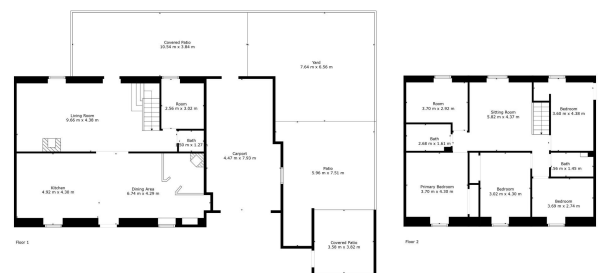












TOTAL: 198 m2
FLOOR 1: 99 m2, FLOOR 2: 99 m2
EXCLUDED AREAS: CARPORT: 33 m2, COVERED PATIO: 55 m2, PATIO: 34 m2
WALLS: 17 m2

Floor Plan Created By Cubicase App. Measurements Deemed Highly Reliable But Not Guaranteed.

Floor Plan Created By Cubicss App. Measurements Deemed Highly Reliable But Not Guaranteed.

